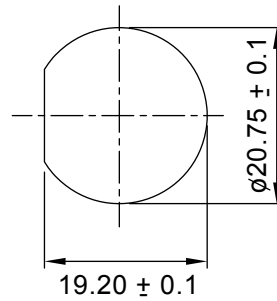


TABLE 1

Code	Cable Length	Tol.
A1	100 mm	±10
A2	200 mm	±10
A3	300 mm	±10
A4	400 mm	±10
A5	500 mm	±20
A6	600 mm	±20
A7	700 mm	±20
A8	800 mm	±20
A9	900 mm	±20
A0	1000 mm	±40

* For Other Please Specify



Recommended Panel Cut-Out

Shield	Drain	Shield
8	Brown	8
7	White/Brown	7
6	Green	6
5	White/Blue	5
4	Blue	4
3	White/Green	3
2	Orange	2
1	White/Orange	1
Conn	Wire Color	Plug
Pin Out		

ELECTRICAL:

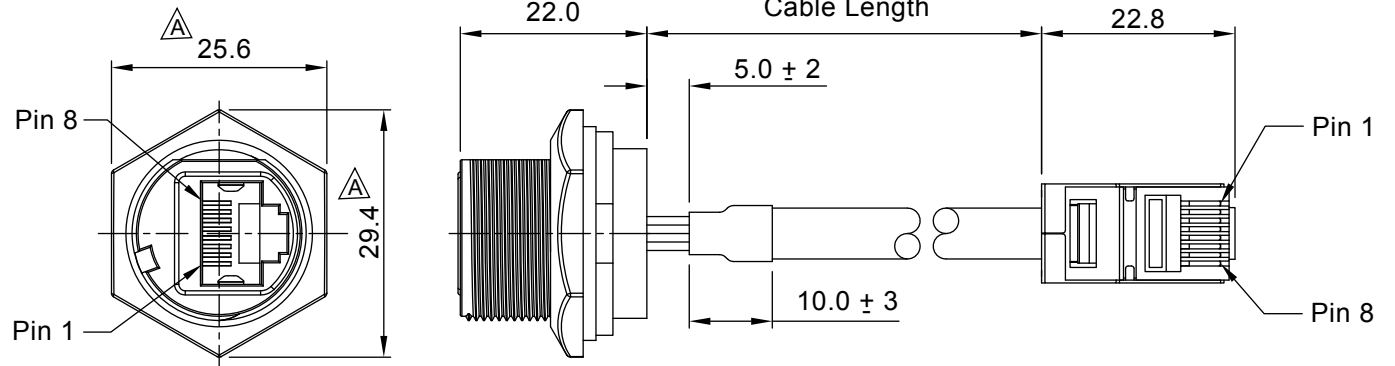
CURRENT RATING: 1.5A Min.
 CONTACT RESISTANCE:
 < 20 Milliohm Max.
 INSULATION RESISTANCE:
 > 500 Megaohm Min.
 DIELECTRIC WITHSTANDING VOLTAGE:
 1000V (rms) AC for 1 Minute
 OPERATING TEMPERATURE: -25° C to +90° C

MATERIAL:

HOUSING: Black Thermal Plastic
 RJ45 RECEPTICAL: Gray Thermal Plastic
 CONTACTS: Copper Alloy, Au Plated Finish
 HEX NUT: Black Thermal Plastic
 GASKET: Black Silicone
 GLUE: Black Epoxy
 SHRINK TUBE: L=10mm Black
 CABLE: CAT5e Gray 24AWG*4P=Al/My=DOD=6.0±0.2mm
 RJ45 PLUG: Shell: Cold Roll Steel, Ni Plated Finish
 Housing: Gray Thermal Plastic
 Contacts: Copper Alloy, Au Plated Finish

MECHANICAL:

DURABILITY: 500 Mating Cycles Min.



HOW TO ORDER:

W R 0 1 - X X 0 0 - 0 0 2 0 - Z

REAR TERMINATION: 1 - Pig Tail
 CABLE LENGTH: See Table 1
 CONTACT PLATING OPTION: 2 - 30 Microinches (Std.)
 RoHS COMPLIANT

Rev	Drawn	Checked	Approved	Date
0	B.S.	S.M.	S.M.	07/06/11
A	B.S.	S.M.	S.M.	11/04/15

SMP TECHNOLOGY, INC.

RJ45, Plastic Panel Mount, Waterproof, IP67, Pig Tail Plug Termination