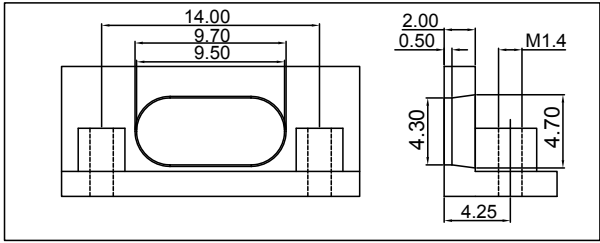


IPX7 RATING



RECOMMENDED PCB LAYOUT (TOP VIEW)

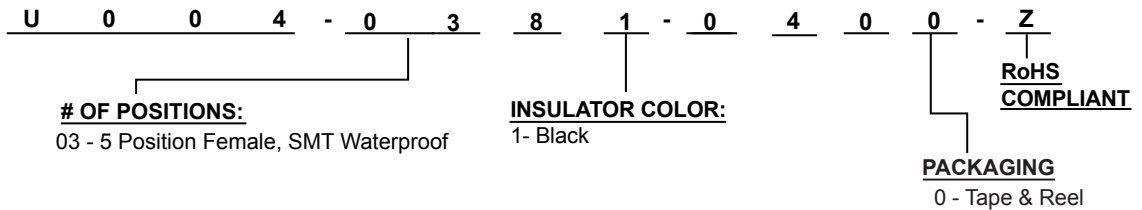
ELECTRICAL:

VOLTAGE RATING: 30 VDC
 CURRENT RATING: 1.8 AMP Pins 1,5; 0.5 AMP Pins 2,3,4
 DIELECTRIC STRENGTH: 500 AC RMS for 1 Minute
 INSULATION RESISTANCE: 1000 MΩ Min. at 500 VDC
 CONTACT RESISTANCE: 30 mΩ Max.

MATERIALS:

HOUSING: High Temperature Thermoplastic, UL94-VO; LCP
 COLOR: Black
 CONTACTS: Copper Alloy; Selective 10u" Gold Plating in Contact Area; Au Flash Plating on Tail section Over 50u" Nickel
 SHELL: Stainless Steel ; Matte Tin Plated
 TEMPERATURE RANGE: -40°C to +85°C

HOW TO ORDER:



Rev	Drawn	Checked	Approved	Date
0 Issued	B.S.	S.M.	S.M.	05/11/18

SMP TECHNOLOGY, INC.

Micro USB Type B, 5 Position, Female , Waterproof, Horizontal

Surface Mount