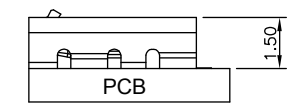
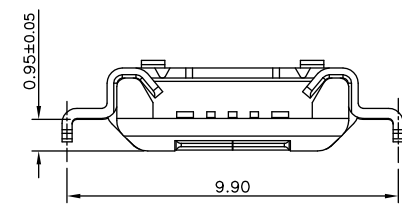
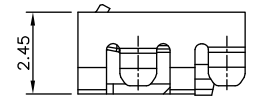
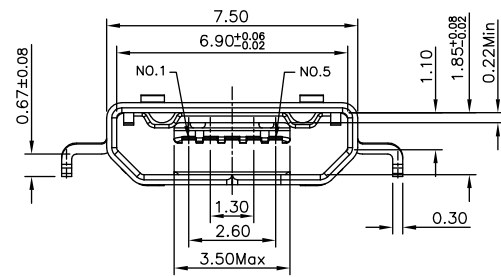
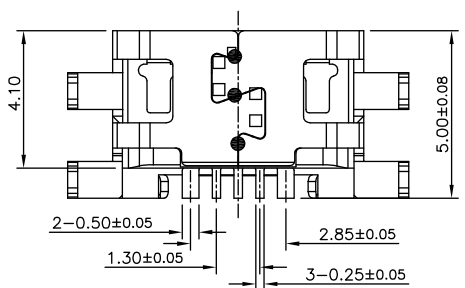


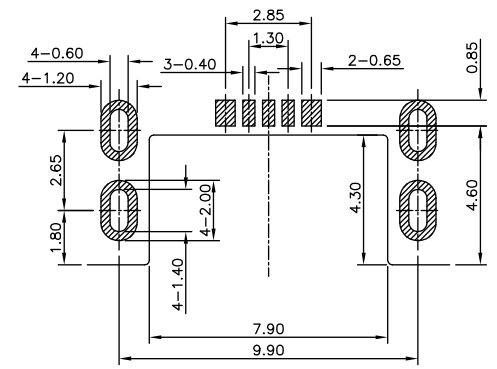
ISOMETRIC VIEW



Connector Mounted on PCB



SECTION A - A



RECOMMENDED PCB LAYOUT

ELECTRICAL:

VOLTAGE RATING: 5V AC
 CURRENT RATING: 1.0 AMP (Signal Pin ,2,3,4) 2.0 AMP (Power Pin 1,5)
 DIELECTRIC STRENGTH: 500V AC Min.
 INSULATION RESISTANCE: 1000 MΩ Min.
 CONTACT RESISTANCE: 30 mΩ Max.

MATERIALS:

HOUSING: High Temperature Thermoplastic, UL94-VO;LCP
 COLOR: Black
 CONTACT PLATING: Selective Gold Plating in Contact Area Over 50~120u" Nickel
 SHELL: Stainless Steel over 30-120u" Nickel
 TEMPERATURE RANGE: -30°C to +80°C
 CONTACT: Copper Alloy C7025

HOW TO ORDER:

U 0 0 4 - 0 1 8 1 - 0 0 X 0 - Z

OF POSITIONS:
 01 - 5 Position Female, SMT

INSULATOR COLOR:
 1- Black

SELECTIVE CONTACT PLATING AREA
 1 - 15μ" Au
 4 - 3u" Au

PACKAGING
 0 - Tape & Reel

RoHS COMPLIANT

Rev	Drawn	Checked	Approved	Date
0	B.S.	S.M.	S.M.	11/21/19

SMP TECHNOLOGY, INC.

Micro USB Type B Receptacle, 5 Position, Surface Mount,
 Mid Mount With Thru Hole Shell Tabs

Scale: N/A
 Tolerance : Dimension .X +/- 0.20 .XX +/- 0.15 .XXX +/- 0.10

SERIES: U004-0181-00X0-Z