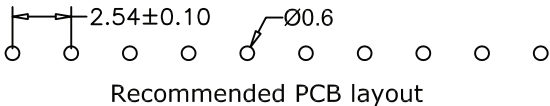


| DIMENSION NUMBER | A | B | C |
|------------------|-------|------|------|
| 01 | 11.20 | 5.00 | 3.00 |
| 02 | 9.80 | 3.60 | 3.00 |



Material:

Pin: Brass, Machined CuZn38Pb3
 Plating:
 Gold Plated: 1.25u/50u" Ni, Full Gold
 Insulator: Black (PPS) UL94V-0

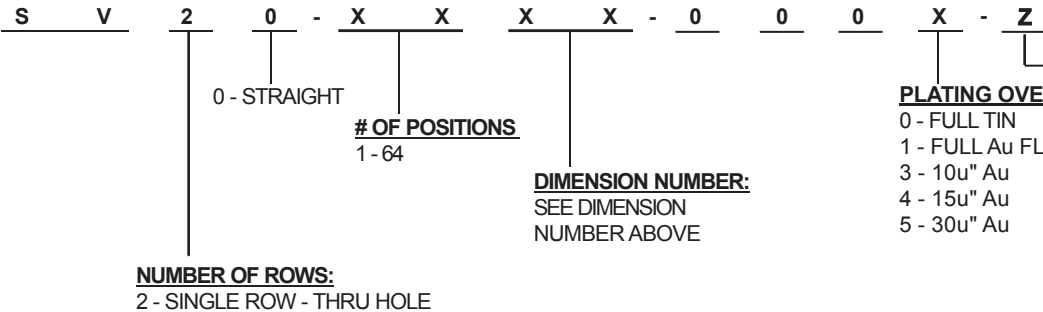
Electrical:

Current Rating: 3 Amps/contact Max.
 Contact Resistance: $4m\Omega$/ contact
 Insulation Resistance: >5000 Ω at V=500V
 Dielectric Withstanding Voltage: 1000V AC Min
 Operating Voltage: 60 AC/DC

Mechanical:

Operating Temperatures: Gold Plated: -55°C to +125°C
 Tin Plated: -40°C to +105°C

HOW TO ORDER:



| Rev | Drawn | Checked | Approved | Date |
|-----|-------|---------|----------|----------|
| 0 | B.S. | S.M. | S.M. | 07/21/11 |
| | | | | |
| | | | | |

SMP TECHNOLOGY, INC.

Screw Machine Header, Single Row Thru Hole, Straight

TOL. DEC. .X +/- 0.20 .XX +/- 0.15 .XXX +/- 0.05 ANGLE +/- 5° UNIT: mm

SERIES: SV20 - XXXX - 000X - Z