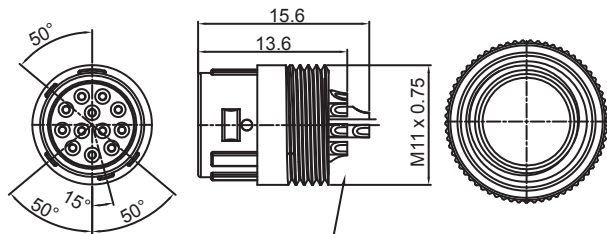
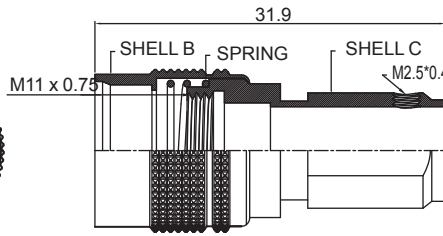


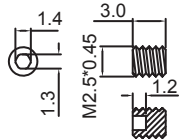
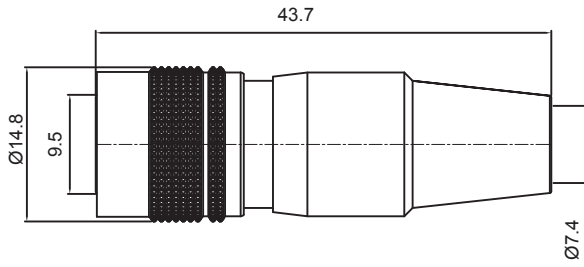
HOUSING+CONTACT+SHELL A



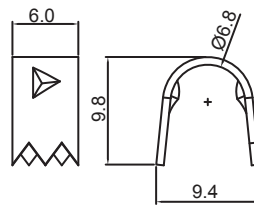
SOLDER CUP TERMINATION  
HOUSING+CONTACT+SHELL A



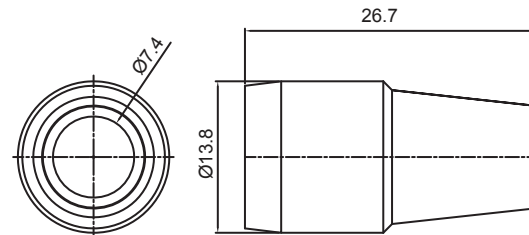
SHELL B + SHELL C + SPRING



SCREW

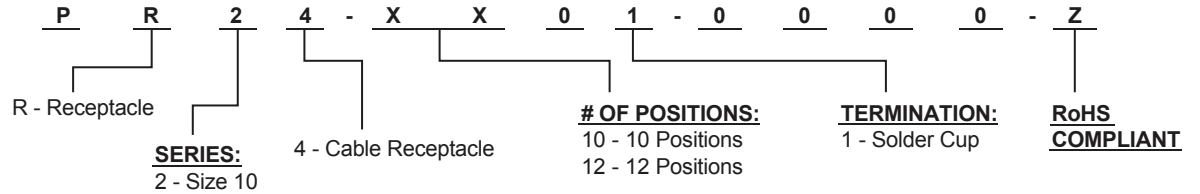


CLAMP



STRAIN RELIEF

**HOW TO ORDER:**



**MATERIAL:**

HOUSING: Nylon 46 (UL94V-0) Black  
 CONTACT: Copper Alloy, Au Flash Plated  
 SHELL A: Zinc Alloy  
 SHELL B & C: Copper Alloy  
 SPRING: Stainless Steel  
 SCREW: Steel Alloy, Nickel Plated

Rev	Drawn	Checked	Approved	Date
0	B.S.	S.M.	S.M.	08/06/19

**SMP TECHNOLOGY, INC.**

Circular Quick Lock Connector (Push Pull Type), Size 10, Cable Receptacle,

Solder Cup Termination

TOL. DEC. .X +/- 0.20 .XX +/- 0.10 .XXX +/- 0.05 ANGLE +/- 1° UNIT: mm

P/N: PR24-XX01-0000-Z