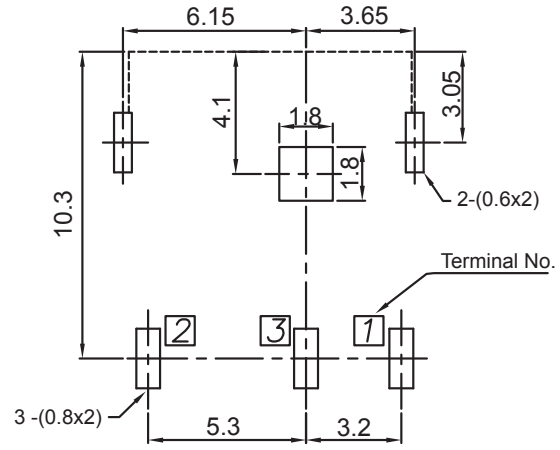
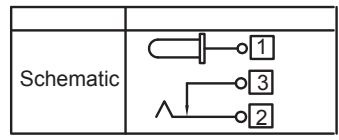
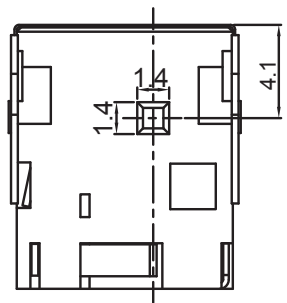


ISOMETRIC VIEW



RECOMMENDED PCB LAYOUT (BOTTOM VIEW)

ELECTRICAL:

RATING: 3.0 AMP / 25VDC Max.
 DIELECTRIC WITHSTANDING VOLTAGE: 500V. r.m.s.
 INSULATION RESISTANCE: 50 Megaohm Min.

CONTACT RESISTANCE: Initial 50 milliohm; 100 milliohms after life cycle test. between mating plug and connector.

MATERIALS:

CONTACTS: Copper Alloy, Silver Plated
 INSULATOR: PA 9T
 SHIELD: Nickel Plated Steel

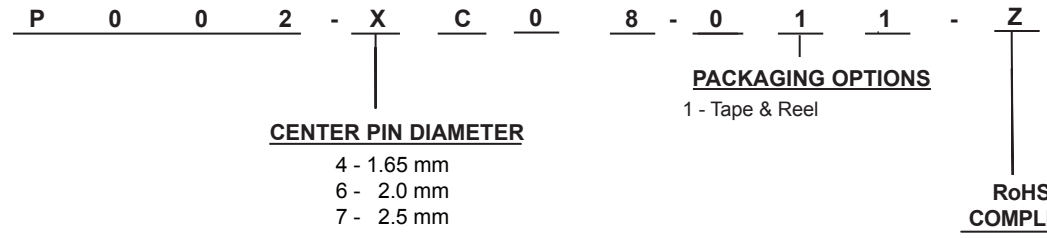
SOLDERABILITY:

REFLOW COMPATIBLE: (260°C for 5 Seconds)
 For Soldering Profile Contact SMP Technology Inc.

ENVIRONMENT:

OPERATING TEMPERATURE: -20°C to +70°C
 STORAGE TEMPERATURE: -40°C to +85°C
 LIFE TEST: 5000 Insertion / Withdrawls

HOW TO ORDER:



Rev		Drawn	Checked	Approved	Date
0	Issued	B.S.	S.M.	S.M.	05/10/12

SMP TECHNOLOGY, INC.

DC Jack, Right Angle, Thru Hole, Shielded, 7.2mm Height,
 10.1mm Width

Scale: N/A
 TOL. DEC. .X +/- 0.2 .XX +/- 0.1 .XXX +/- 0.05 ANGLE +/- 2° UNIT: mm

SERIES: P002-XC08-011-Z