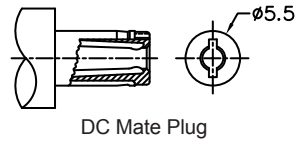
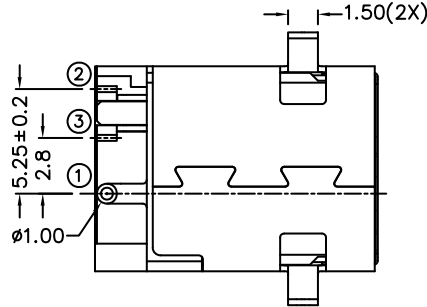
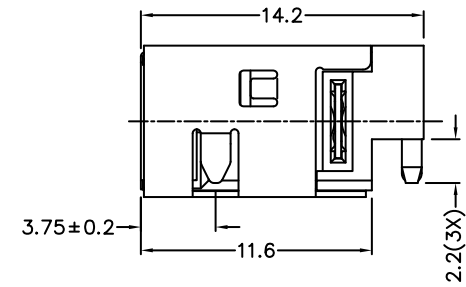
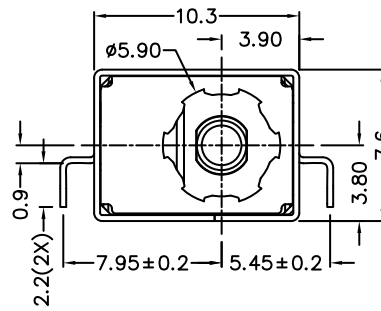
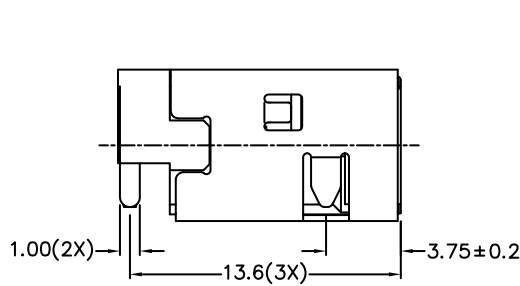
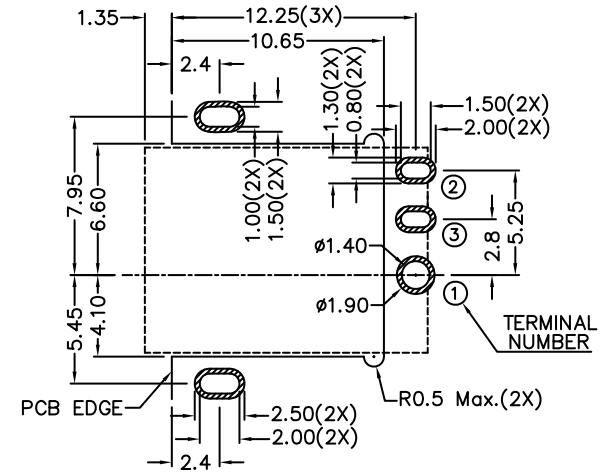


ISOMETRIC VIEW



DC Mate Plug

SCHEMATIC			
CENTER PIN	<table border="1"> <tr> <td>ø2mm</td> </tr> <tr> <td>ø2.5mm</td> </tr> </table>	ø2mm	ø2.5mm
ø2mm			
ø2.5mm			



RECOMMENDED PCB LAYOUT (TOP VIEW)

ELECTRICAL:

RATING: 5 AMP / 16 VDC Max.
 DIELECTRIC WITHSTANDING VOLTAGE: 500V. r.m.s.
 INSULATION RESISTANCE: 50 Megaohm Min.
 CONTACT RESISTANCE: Initial 50 milliohm; 100 milliohms after life cycle test. between mating plug and connector.

MATERIALS:

CONTACTS: Copper Alloy, Silver Plated
 INSULATOR: PA 6T
 SHIELD: Nickel Plated Steel

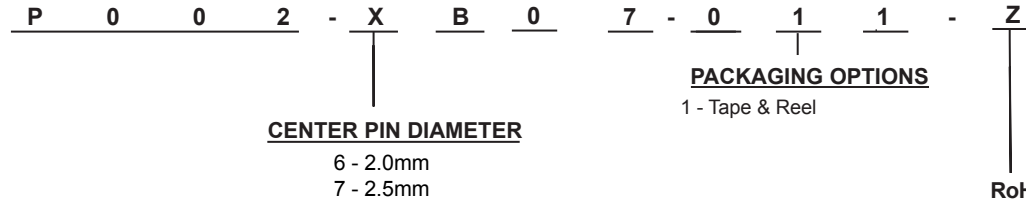
SOLDERABILITY:

REFLOW COMPATIBLE: (260°C for 5 Seconds)
 For Soldering Profile Contact SMP Technology Inc.

ENVIRONMENT:

OPERATING TEMPERATURE: -25°C to +85°C
 STORAGE TEMPERATURE: 0°C to +40°C
 LIFE TEST: 5000 Insertion / Withdrawals

HOW TO ORDER:



Rev		Drawn	Checked	Approved	Date
0	Issued	B.S.	S.M.	S.M.	05/10/12

SMP TECHNOLOGY, INC.

DC Jack, Right Angle, Thru Hole, Shielded,
 7.6mm Height x 10.3mm Width, Mid-Board Mount

Scale: N/A

TOL. DEC. .X +/- 0.2 .XX +/- 0.1 .XXX +/- 0.05 ANGLE +/- 2° UNIT: mm

SERIES: P002-XB07-011-Z