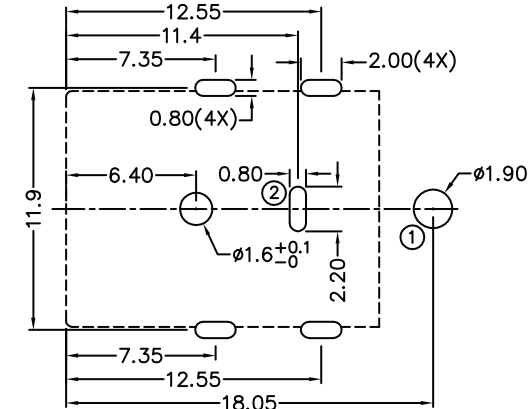
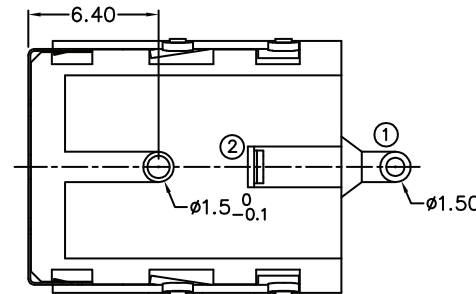
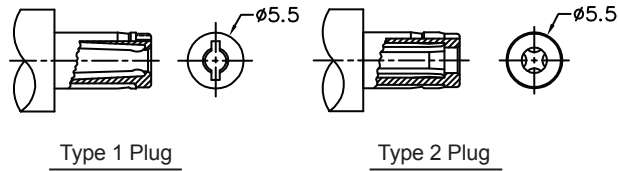


SCHEMATIC	
CENTER PIN	$\phi 2.5\text{mm}$



ELECTRICAL:

RATING: Type 1 Plug - 20 VDC 7 AMP
 Type 2 Plug - 20 VDC 10 AMPS
 DIELECTRIC WITHSTANDING VOLTAGE: 500V.r.m.s.
 INSULATION RESISTANCE: 50 Megaohm Min.
 CONTACT RESISTANCE: Initial 50 milliohm; 100 milliohms after life cycle test. between mating plug and connector.

MATERIALS:

CONTACTS: Copper Alloy, Silver Plated
 INSULATOR: PA 6T
 SHIELD: Nickel Plated Steel

SOLDERABILITY:

REFLOW COMPATIBLE: (260°C for 5 Seconds)
 For Soldering Profile Contact SMP Technology Inc.

ENVIRONMENT:

OPERATING TEMPERATURE: -25°C to + 85°C
 STORAGE TEMPERATURE: 0°C to + 40°C
 LIFE TEST: 5000 Insertion / Withdrawals

HOW TO ORDER:

P 0 0 2 - 7 A 0 6 - 0 X 1 - Z

CENTER PIN DIAMETER

7 - 2.5 mm

PACKAGING OPTIONS

0 - TRAY
 2 - Tube

**RoHS
 COMPLIANT**

Rev	Drawn	Checked	Approved	Date
0 Issued	B.S.	S.M.	S.M.	05/10/12

SMP TECHNOLOGY, INC.

DC Jack, High Current, Right Angle, Thru Hole,
 Shielded, 13.4mm Height

TOL. DEC. .X +/- 0.2 .XX +/- 0.1 .XXX +/- 0.05 ANGLE +/- 2° UNIT: mm

SERIES: P002-7A06-0X1-Z