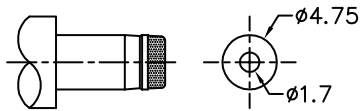


P.C.B LAYOUT
(BOTTOM VIEW)



MATING DC PLUG

PIN	Ø1.6mm
SCHEMATIC	

MECHANICAL:

DURABILITY: 5000 Cycles (Insertion & Withdrawl)

ELECTRICAL:

CONTACT RESISTANCE: Will Not Exceed 0.1 ohm

INSULATOR RESISTANCE: > 50MΩ

DIELECTRIC WITHSTANDING VOLTAGE: 250VAC FOR 1 MIN.

OPERATING TEMPERATURE: -40°C TO +105°C

CURRENT RATING - 5 AMP / !^ VDC (HIGH CURRENT MODEL)

MATERIAL:

INSULATOR: PA 6T (UL94V-0)

SIGNAL CONTACT: COPPER ALLOY, SILVER PLATED

GROUND CONTACT: COPPER ALLOY, SILVER PLATED

TERMINAL: COPPER ALLOY, SILVER PLATED

HOW TO ORDER:

P 0 0 2 - 4 0 0 1 - 3 0 0 - Z X

CENTER PIN DIAMETER:

4 - 1.6mm

PCB MOUNTING OPTIONS:

3 - SURFACE MOUNT

PACKAGING:

0 - TRAY
1 - TAPE/REEL

RoHS COMPLIANT

TYPE

Blank - Standard Model
H - High Current Model

Rev	Drawn	Checked	Approved	Date
0	A.M.	S.M.	S.M.	01/22/04
A	B.S.	S.M.	S.M.	4/12/07

SMP TECHNOLOGY, INC.

DC Power Jack, Right Angle Surface Mount

SCALE:n/a 1.6mm Pin Diameter, 6.0mm Height

TOL. DEC. .X +/- 0.3 .XX +/- 0.15 .XXX +/- ANGLE +/- 3° UNIT: mm

P/N: P002-4001-300-ZX