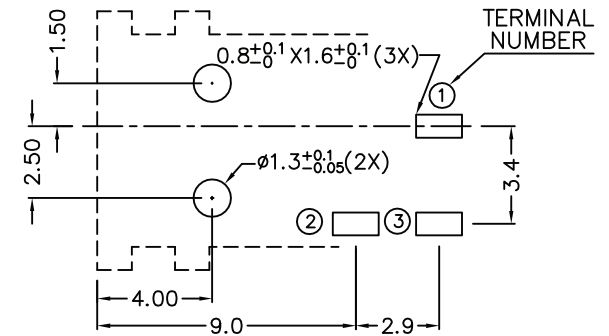
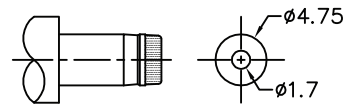


PIN	$\phi 1.6\text{mm}$
SCHEMATIC	



P.C.B LAYOUT
(BOTTOM VIEW)



DC MATE PLUG

MECHANICAL:

DURABILITY: 5000 Cycles (Insertion & Withdraw)

ELECTRICAL:

CONTACT RESISTANCE: Will Not Exceed 0.1 ohm

INSULATOR RESISTANCE: > 50M Ω

DIELECTRIC WITHSTANDING VOLTAGE: 250VAC FOR 1 MIN.

OPERATING TEMPERATURE: -40°C TO +105°C

MATERIAL:

INSULATOR: PBT (UL94V-0)

SIGNAL CONTACT: COPPER ALLOY, SILVER PLATED

GROUND CONTACT: COPPER ALLOY, SILVER PLATED

TERMINAL: COPPER ALLOY, SILVER PLATED

MOUNTING PIN: COPPER ALLOY, NICKEL PLATED

HOW TO ORDER:

P 0 0 2 - 4 0 0 1 - 0 X 0 - Z

CENTER PIN DIAMETER:
4 - 1.6mm

PCB MOUNTING OPTIONS:
0 - SOLDER TAIL

PACKAGING:
0 - TRAY
1 - TAPE/REEL

RoHS COMPLIANT

Rev	Drawn	Checked	Approved	Date
0	A.M.	S.M.	S.M.	01/22/04
A	B.S.	S.M.	S.M.	4/12/07
SCALE:n/a				
TOL. DEC. .X +/- 0.3 .XX +/- 0.15 .XXX +/- ANGLE +/- 3° UNIT: mm				

SMP TECHNOLOGY, INC.	
DC Power Jack, Right Angle Thru Hole	
1.6mm Pin Diameter, 6.0mm Height	
P/N: P002-4001-0X0-Z	Pg: 1