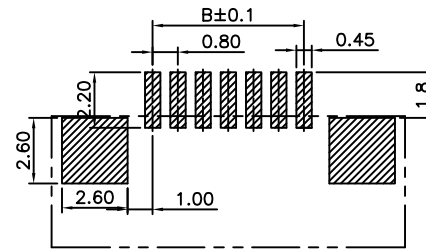
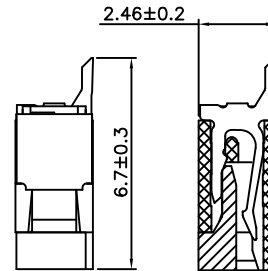
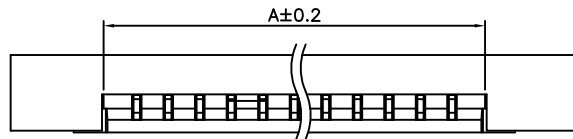
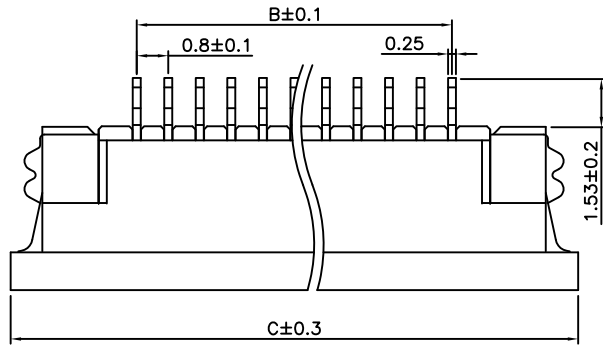
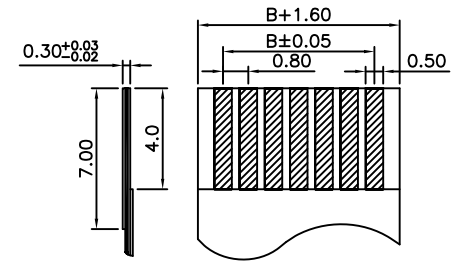
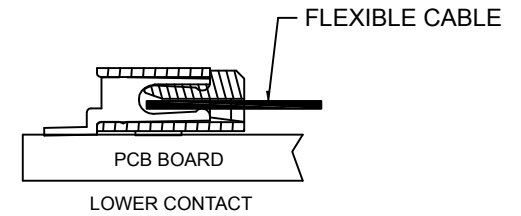


Pins	A	B	C
4	4.10	2.40	9.95
5	4.90	3.20	10.75
6	5.70	4.00	11.55
7	6.50	4.80	12.35
8	7.30	5.60	13.15
9	8.10	6.40	13.95
10	8.90	7.20	14.75
11	9.70	8.00	15.55
12	10.50	8.80	16.35
13	11.30	9.60	17.15
14	12.10	10.40	17.95
15	12.90	11.20	18.75
16	13.70	12.00	19.55
17	14.50	12.80	20.35
18	15.30	13.60	21.15
19	16.10	14.40	21.95
20	16.90	15.20	22.75
21	17.70	16.00	23.55
22	18.50	16.80	24.35
23	19.30	17.60	25.15
24	20.10	18.40	25.95
25	20.90	19.20	26.75
26	21.70	20.00	27.55
27	22.50	20.80	28.35
28	23.30	21.60	29.15
29	24.10	22.40	29.95
30	24.90	23.20	30.75
31	25.70	24.00	31.55
32	26.50	24.80	32.35
33	27.30	25.60	33.15
34	28.10	26.40	33.95
35	28.90	27.20	34.75
36	29.70	28.00	35.55
37	30.50	28.80	36.35
38	31.30	29.60	37.15



RECOMMENDED PCB LAYOUT



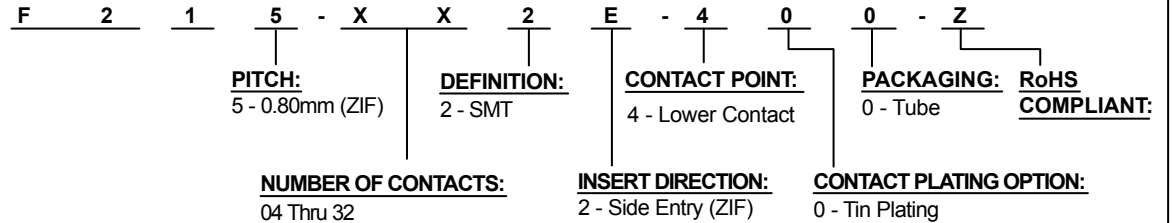
FFC/FPC RECOMMENDED DIMENSIONS

MATERIAL:

COVER: Liquid Crystal Polymer (Black)
 INSULATOR: Liquid Crystal Polymer UL94V-0
 CONTACT: Phosphor Bronze
 FINISH: Tin Plate over Nickel

ELECTRICAL:

CURRENT RATING: 0.5A
 CONTACT RESISTANCE: 40 mΩ Max.
 INSULATION RESISTANCE: 500 MΩ Min.
 VOLTAGE RATING: 50 V AC/DC
 OPERATING TEMPERATURE: -40° C ~ +105° C



Rev	Drawn	Checked	Apv.	Date	
0	Issued	B.S.	B.S.	S.M.	06/28/12
TOL. DEC.	.X +/- 0.20	.XX +/- 0.10	.XXX +/- 0.05	ANGLE +/-	UNIT: mm

SMP TECHNOLOGY, INC.

FFC Connector - ZIF Type, 0.80mm Pitch, SMT, Side Entry, Surface Mount, Bottom Contact

P/N: F 2 1 5 - X X 2 E - 4 0 0 - Z