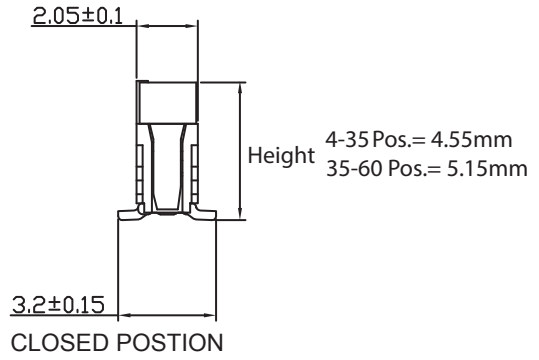
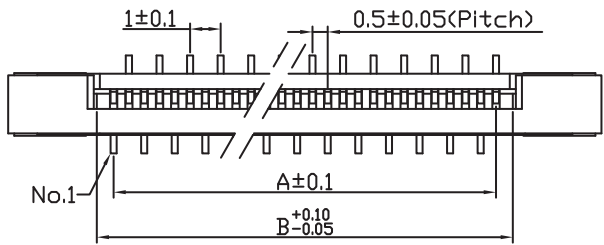


FFC/FPC DIMENSION



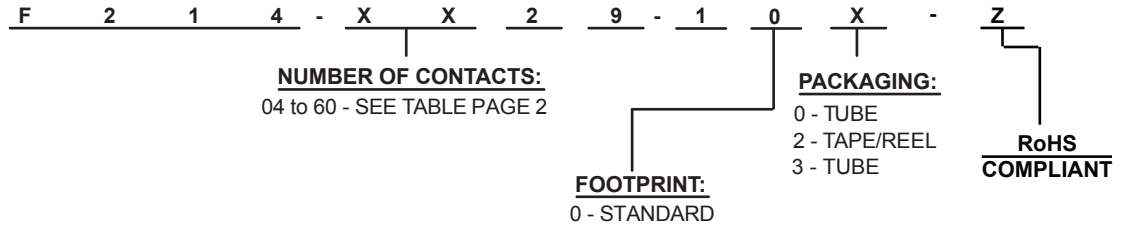
ELECTRICAL:

CURRENT RATING: 0.5A
 VOLTAGE RATING: 50 VDC
 CONTACT RESISTANCE: 30mΩ max. (at 20 mVDC, 100mA max.)
 INSULATOR RESISTANCE: 500MΩ min. (at 500 VDC)
 DIELECTRIC WITHSTANDING VOLTAGE: AC 500V / 60sec.
 OPERATING TEMPERATURE: -25°C to +85°C

MATERIAL:

HOUSING: PA46 UL94V-0 /COLOR: Black
 SLIDER: PPS (UL94V-0)
 CONTACT PLATING: Tin (80u") over Nickel (50u") MIN.

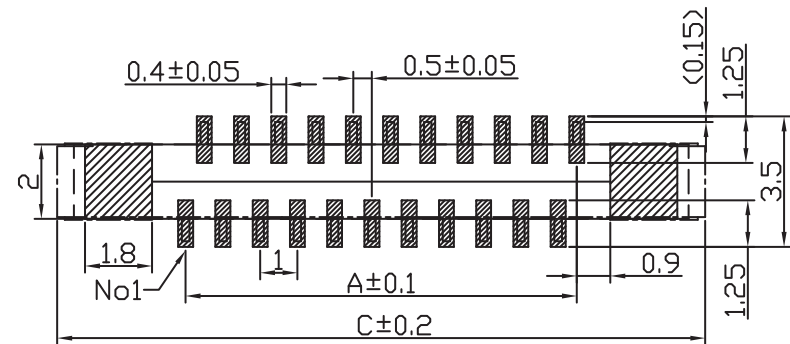
HOW TO ORDER:



Rev	Drawn	Checked	Approved	Date
0	B.S.	S.M.	S.M.	04/10/13

SMP TECHNOLOGY, INC.
 FFC Connector, 0.5mm Pitch, Top Entry, ZIF, Surface Mount
 Type B; Standard Footprint

# CKTS	A	B	C	# CKTS	A	B	C
4	1.5	2.6	8.4	33	16	17.1	22.9
5	2	3.1	8.9	34	16.5	17.6	23.4
6	2.5	3.6	9.4	35	17	18.1	23.9
7	3	4.1	9.9	36	17.5	18.6	24.4
8	3.5	4.6	10.4	37	18	19.1	24.9
9	4	5.1	10.9	38	18.5	19.6	25.4
10	4.5	5.6	11.4	39	19	20.1	25.9
11	5	6.1	11.9	40	19.5	20.6	26.4
12	5.5	6.6	12.4	41	20	21.1	26.9
13	6	7.1	12.9	42	20.5	21.6	27.4
14	6.5	7.6	13.4	43	21	22.1	27.9
15	7	8.1	13.9	44	21.5	22.6	28.4
16	7.5	8.6	14.4	45	22	23.1	28.9
17	8	9.1	14.9	46	22.5	23.6	29.4
18	8.5	9.6	15.4	47	23	24.1	29.9
19	9	10.1	15.9	48	23.5	24.6	30.4
20	9.5	10.6	16.4	49	24	25.1	30.9
21	10	11.1	16.9	50	24.5	25.6	31.4
22	10.5	11.6	17.4	51	25	26.1	31.9
23	11	12.1	17.9	52	25.5	26.6	32.4
24	11.5	12.6	18.4	53	26	27.1	32.9
25	12	13.1	18.9	54	26.5	27.6	33.4
26	12.5	13.6	19.4	55	27	28.1	33.9
27	13	14.1	19.9	56	27.5	28.6	34.4
28	13.5	14.6	20.4	57	28	29.1	34.9
29	14	15.1	20.9	58	28.5	29.6	35.4
30	14.5	15.6	21.4	59	29	30.1	35.9
31	15	16.1	21.9	60	29.5	30.6	36.4
32	15.5	16.6	22.4				



RECOMMENDED PCB LAYOUT
(COMPONENT SIDE)

SMP TECHNOLOGY, INC.

FFC Connector, 0.5mm Pitch, Top Entry, ZIF, Surface Mount

Type B; Standard Footprint

P/N: F214-XX29-10X-Z