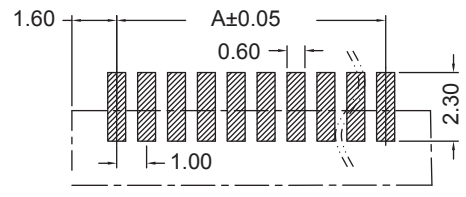
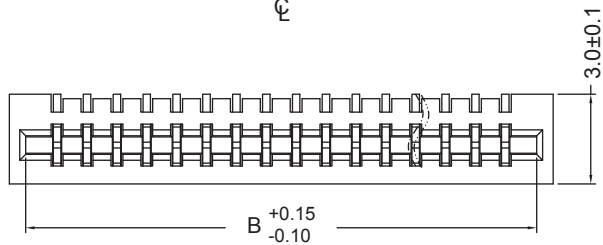


RECOMMENDED FFC DIMENSIONS



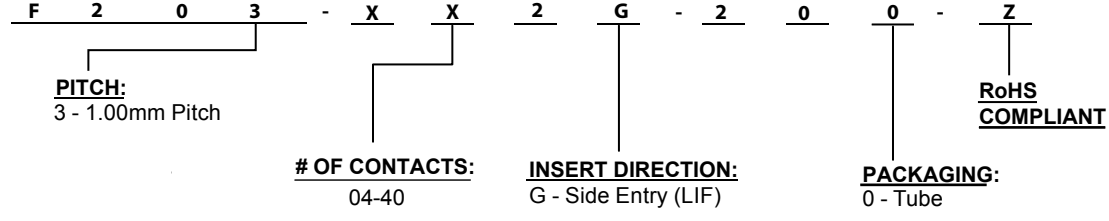
RECOMMENDED PCB LAYOUT

Pins	A	B	C
4	3.00	5.10	6.20
5	4.00	6.10	7.20
6	5.00	7.10	8.20
7	6.00	8.10	9.20
8	7.00	9.10	10.20
9	8.00	10.10	11.20
10	9.00	11.10	12.20
11	10.00	12.10	13.20
12	11.00	13.10	14.20
13	12.00	14.10	15.20
14	13.00	15.10	16.20
15	14.00	16.10	17.20
16	15.00	17.10	18.20
17	16.00	18.10	19.20
18	17.00	19.10	20.20
19	18.00	20.10	21.20
20	19.00	21.10	22.20
21	20.00	22.10	23.20
22	21.00	23.10	24.20
23	22.00	24.10	25.20
24	23.00	25.10	26.20
25	24.00	26.10	27.20
26	25.00	27.10	28.20
27	26.00	28.10	29.20
28	27.00	29.10	30.20
29	28.00	30.10	31.20
30	29.00	31.10	32.20
31	30.00	32.10	33.20
32	31.00	33.10	34.20
33	32.00	34.10	35.20
34	33.00	35.10	36.20
35	34.00	36.10	37.20
36	35.00	37.10	38.20
37	36.00	38.10	39.20
38	37.00	39.10	40.20
39	38.00	40.10	41.20
40	39.00	41.10	42.20

ELECTRICAL:
 CURRENT RATING: 0.5A
 CONTACT RESISTANCE:
 < 20 Milliohm Max.
 INSULATION RESISTANCE:
 > 800Megaohm Min.
 DIELECTRIC WITHSTANDING VOLTAGE:
 500 V AC for 1 Minute
 OPERATING TEMPERATURE: -25°C to + 85°C

MATERIAL:
 INSULATOR: Thermoplastic, Nylon 46
 FLAMMABILITY RATING: PA9T
 CONTACT MATERIAL: Copper Alloy
 PLATING: Tin Plating Over Nickel

HOW TO ORDER:



Rev	Drawn	Checked	Approved	Date
0	B.S.	S.M.	S.M.	04/10/19

SMP TECHNOLOGY, INC.
 FFC Connector, 1.0mm Pitch, Surface Mount, LIF, Side Entry
 P/N: F203-XX2G-200-Z
 Pg. 1 of 1

SCALE: N/A
 TOL. DEC. .X +/- 0.25 .XX +/- 0.15 .XXX +/- ANGLE +/- 2° UNIT: mm