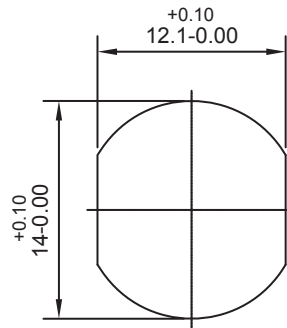


NUT

P/N: HW-N-M14\*1.0-17



RECOMMENDED PANEL CUT OUT

**ELECTRICAL:**

CURRENT RATING: 7.5A / DC Max.  
 RATED VOLTAGE: 25 VDC Max.  
 OPERATING TEMPERATURE: - 20°C To 85°C

**MATERIAL:**

HOUSING: PBT (UL94V-0)  
 PIN: Phosphor Bronze, Nickel Plated  
 SHELL: Brass, Nickel Plated 60u"-100u" Overall  
 NUT: Brass, Nickel Plated 60u"-100u" Overall

**HOW TO ORDER:**

D 0 4 0 - 0 4 1 1 - 0 0 0 - Z

# OF CONTACTS:  
 04- 4 Position

SHIELD OPTION:  
 1 - SHIELDED

RoHS  
COMPLIANT

Rev	Drawn	Checked	Approved	Date
0	B.S	S.M.	S.M.	05/12/11
A	B.S	S.M.	S.M.	12/14/18
B	B.S	S.M.	S.M.	10/02/19

**SMP TECHNOLOGY, INC.**

Panel Mount Power Mini DIN, 4 Position, Rear Screw Mount

TOL. DEC. X +/- 0.5 .X +/- 0.3

ANGLE +/- UNIT: mm

P/N: D040-0411-000-Z