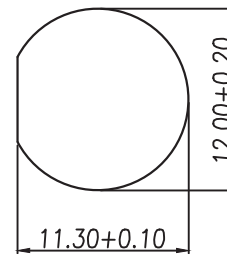


Nut



Panel Cutout

TABLE 1		
D006-0450-200-Z	D006-0650-200-Z	D006-0850-200-Z

ELECTRICAL:

CURRENT: 1A
RATED VOLTAGE: 30V

MATERIAL:

INSULATOR: THERMOPLASTIC PBT (UL94V-0)
CONTACT: COPPER ALLOY

MECHANICAL:

INSERTION FORCE: 4.0Kg Max.
WITHDRAWAL FORCE: 0.9Kg Min.

HOW TO ORDER:

D 0 0 6 - X X 5 0 - 2 0 X - Z

NUMBER OF POSITIONS

04 - 4 Positions
06 - 6 Positions
08 - 8 Positions
(See Table 1)

RoHS COMPLIANT

PLATING:

0 - Au FLASH CONTACT AREA
1 - 15u" Au CONTACT AREA

Rev	Drawn	Checked	Approved.	Date
0	B.S.	S.M.	S.M.	08/20/14

SMP TECHNOLOGY, INC.

Mini Din, Rear Panel / Bulkhead Mount, All Metal, IPX7 Rated

TOL. DEC. X. +/- 0.5 X.X +/- 0.25 X.XX +/- 0.10 ANGLE +/- UNIT: mm

P/N: D006-XX50-20X-Z