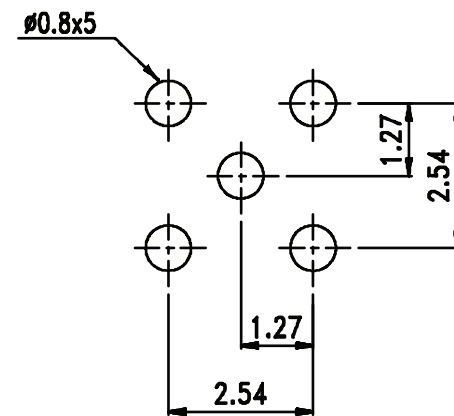
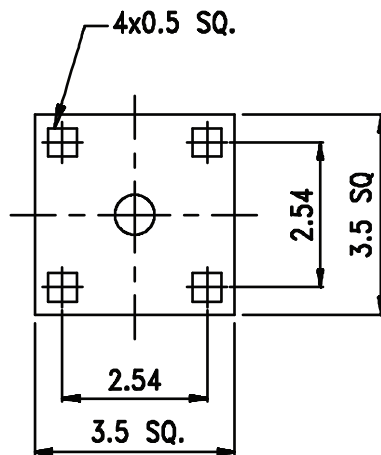
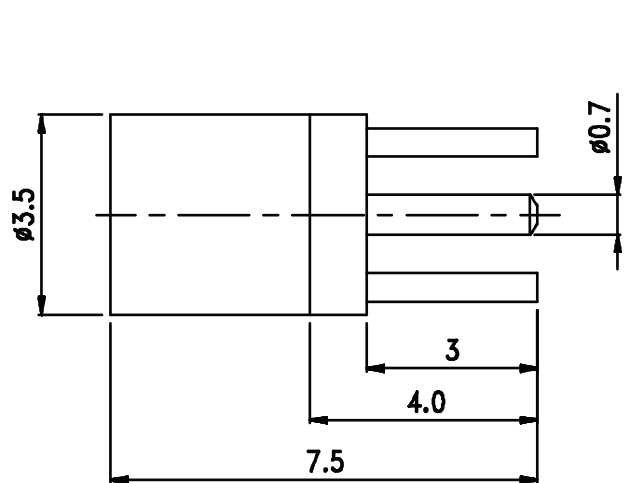


03	PIN	BE CU	GOLD	1
02	INSULATOR	PTFE	NONE	1
01	BODY	BRASS	GOLD	1
NO	DESCRIPTION	MATERIAL	FINISH	Q'TY



Recommended  
PCB Layout

**HOW TO ORDER**

C 1 0 0 - 6 6 1 0 - 2 0 0 0 - Z

RoHS  
COMPLIANT

Rev	Description	Drawn	Checked	Approved	Date
0	Issued	B.S.	S.M.	S.M.	11/16/11

**SMP TECHNOLOGY, INC.**

MMCX PCB Jack, Vertical, 3.0mm PCB Tail Length

TOL. DEC. .X +/- 0.2 .XX +/- 0.2 .XXX +/- 0.2 ANGLE +/- 3° UNIT: mm

P/N: C100-6610-2000-z