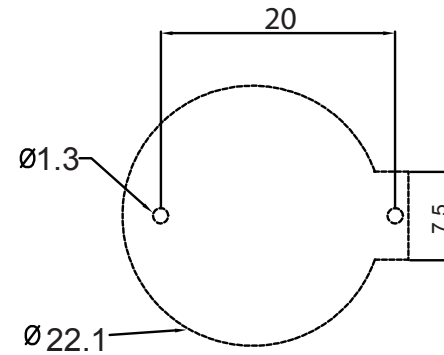
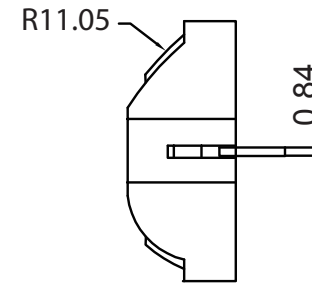
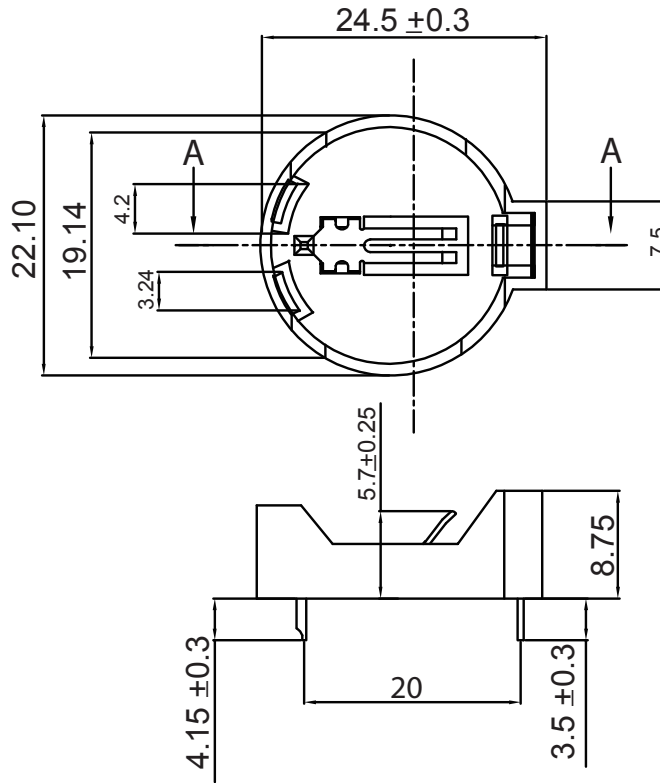


SECTION A-A



RECOMMENDED PCB LAYOUT

ELECTRICAL:

VOLTAGE RATING: DC 3V, 120 mA
 CONTACT RESISTANCE: 30 mohm Max.
 INSULATION RESISTANCE: 100Mohm Min. at 500VDC
 VOLTAGE DURABILITY: 600VDC FOR 1 MIN.

CONTACTS:

CONTACT: C2680 TIN PLATED

MATERIAL:

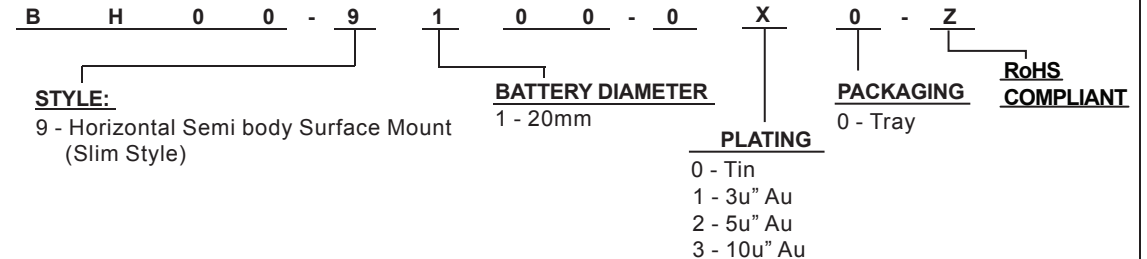
HOUSING: PBT

MECHANICAL:

INSERTION FORCE: 0.3Kg~1.0Kg
 SPRING PRESSURE: 50G Min.

TERMINAL STRENGTH: ELECTRICAL AND MECHANICAL PERFORMANCE SPECIFICATIONS SHOULD STILL BE SATISFIED WITHOUT TERMINAL CRACKING OR EXCESSIVE PLAY, WITH A STATIC LOAD OF 1Kg APPLIED TO THE TERMINALS IN ANY DIRECTION. HOWEVER THE TERMINAL MAY BEND

HOW TO ORDER:



Rev	Drawn	Checked	Approved	Date
0 Issued	B.S.	S.M.	S.M.	05/29/15

SMP TECHNOLOGY, INC.

Battery Holder, Horizontal, Thru Hole PC Mount, Surface Mount For 20.0mm Battery,

SCALE:n/a

TOL. DEC. .X +/- 0.25 .XX +/- 0.20 .XXX +/- ANGLE +/- UNIT: mm

P/N: BH00-9100-0X0-Z