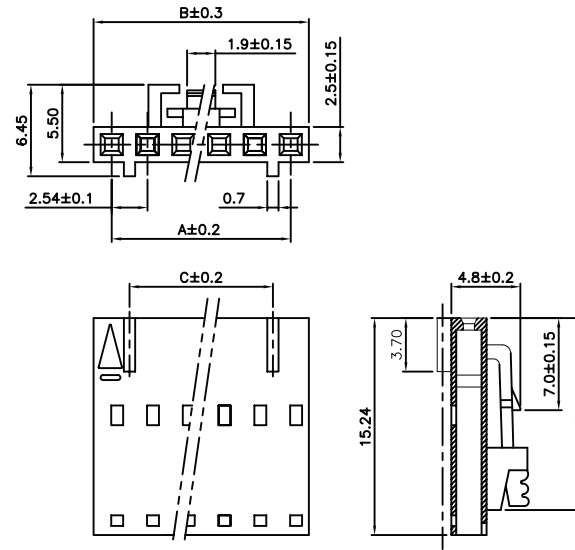


# RECEPTACLE CONTACT HOUSING

Poles	Dimensions(mm)		
	A	B	C
2	2.54	5.08	-----
3	5.08	7.62	-----
4	7.62	10.16	5.08
5	10.16	12.70	7.62
6	12.70	15.24	10.16
7	15.24	17.78	12.70
8	17.78	20.32	15.24
9	20.32	22.86	17.78
10	22.86	25.40	20.32
11	25.40	27.94	22.86
12	27.94	30.48	25.40
13	30.48	33.02	27.94
14	33.02	35.56	30.48
15	35.56	38.10	33.02
16	38.10	40.64	35.56
17	40.64	43.18	38.10
18	43.18	45.72	40.64



HOW TO ORDER:

B 7 0 5 - X X 3 0 - 0 0 9 - Z

NUMBER OF POSITIONS:  
02 thru 18

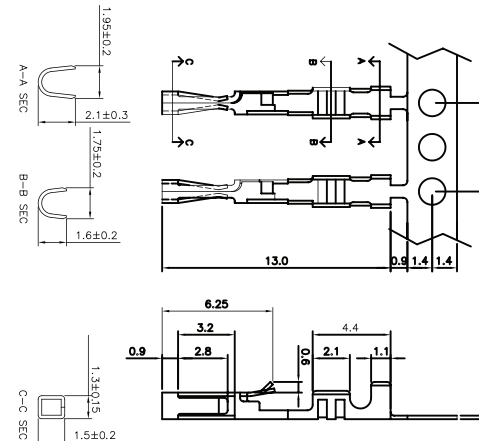
RoHS  
COMPLIANT

\* Material: Nylon UL 94V-0

\* Current rating : 3A, AC/DC

\* Voltage rating : 250V, AC/DC

## CONTACTS



CONTACT PLATING:  
0 - GOLD FLASH  
8 - TIN PLATED

RoHS  
COMPLIANT

### ELECTRICAL:

CURRENT RATING: 3A

CONTACT RESISTANCE:  $< 15m \Omega$

INSULATOR RESISTANCE:  $> 1000M \Omega$

DIELECTRIC WITHSTANDING VOLTAGE: 600VAC FOR 1 MIN.

OPERATING TEMPERATURE:  $-40^{\circ}C$  TO  $+105^{\circ}C$

### MATERIAL:

INSULATOR: POLYESTER (UL94V-0)

CONTACT: COPPER ALLOY

HOW TO ORDER:

B 7 0 5 - 0 0 0 2 - 0 0 X - Z

Rev		Apv.	Date	<b>SMP TECHNOLOGY, INC.</b>			
0	Issued	D.H	2/27/04				
A	Added RoHS	WHS	3/31/06				
SCALE	MAT'L	FINISH	B705 Receptacle Housing & Contacts				
TOL. DEC.	.X +/- 0.35	.XX +/- 0.25	.XXX +/-	ANGLE +/-	UNIT: mm	SERIES: B 7 0 5	Pg: 1