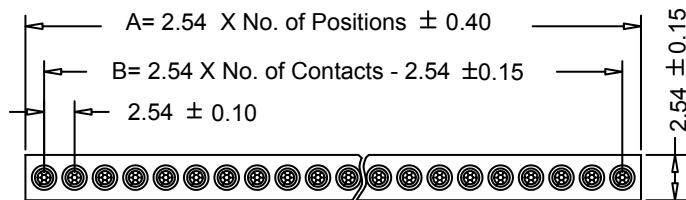
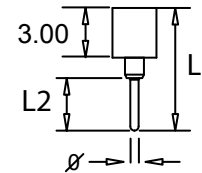


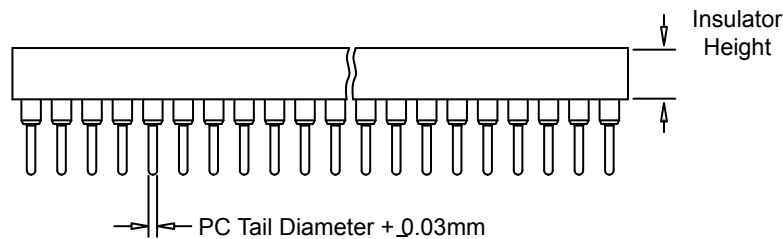
Insulator and Contact Height Options



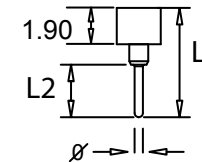
INSULATOR HEIGHT 3.00 mm
 * Accepts Mating Pin with Outside Diameter .43 to .56mm



Option #	L1	L2	PC Tail Dia.
0	7.4	3.0	.5
5	7.4	2.7	.5
1	8.3	4.2	.5
A	13.3	3.2	.5
B	15.0	3.2	.5
C	19.8	3.2	.5
D	25.3	3.2	.5

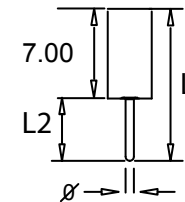


INSULATOR HEIGHT 1.90 mm
 * Accepts Mating Pin with Outside Diameter .40 to .56mm



Option #	L1	L2	PC Tail Dia.
3	4.8	2.27	.73
7	4.8	2.7	.73

INSULATOR HEIGHT 7.00 mm
 * Accepts Mating Pin with Outside Diameter .64 to .94mm or .64mm²



Option #	L1	L2	PC Tail Dia.
2	11.6	3.0	.5
6	10.0	3.0	.6

ELECTRICAL:

CURRENT: 3A
 CONTACT RESISTANCE: < 4m W
 INSULATOR RESISTANCE: > 1000M W
 OPERATING VOLTAGE: 60V AC/DC
 DIELECTRIC WITHSTANDING VOLTAGE: 1000VAC FOR 1 MIN.

MATERIAL:

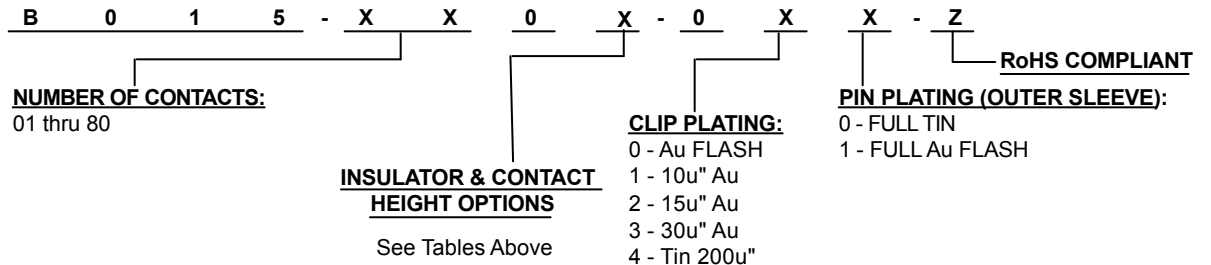
PIN (OUTER SLEEVE): BRASS
 CLIP (4 FINGER CONTACT): BERYLLIUM COPPER
 CONTACT PLATING: OPTIONAL TIN OR GOLD OVER 80u" NICKEL
 INSULATOR: GLASS FILLED POLYESTER (UL94V-0)

MECHANICAL:

OPERATING TEMPERATURE (GOLD PLATING): -55° C TO +125° C
 OPERATING TEMPERATURE (TIN PLATING): -40° C TO +105° C
 SOLDER TEMPERATURE: 260° C FOR 10 SEC. (MAX.)

Note: For other Insulator and Contact Height Options contact SMP Technology Inc.

HOW TO ORDER:



Rev	Drawn	Checked	Approved	Date	SMP TECHNOLOGY, INC.		
0	S.E.	S.M.	S.M.	6/15/98			
A	G.T.	S.M.	S.M.	11/01/05	SIP Socket, 2.54mm Pitch, Machine Pin		
TOL. DEC.	.X +/- 0.35	.XX +/- 0.25	.XXX +/-	ANGLE +/-	UNIT: mm	SERIES: B 0 1 5-XX0X-0XX-Z	Pg: 1