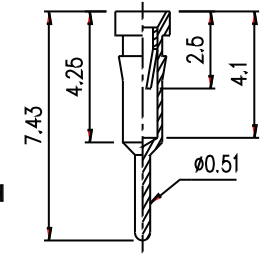
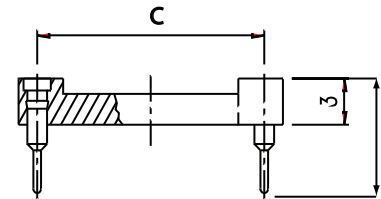
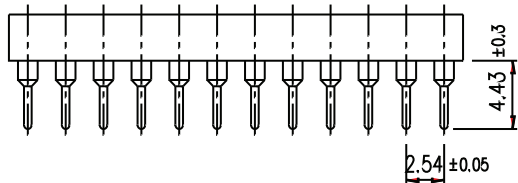


DIP SPACING	NO. OF CONTACTS AVAILABLE
7.62 (0.300")	06, 08, 10, 14, 16, 18, 20, 22, 24, 28
10.16 (0.400")	20, 22, 24, 28, 32
15.24 (0.600")	24, 28, 32, 36, 40, 42, 48, 50, 52
22.86 (0.900")	50, 52, 64



**PIN DETAIL
STANDARD CONTACT**

ELECTRICAL:

CURRENT: 3A
 CONTACT RESISTANCE: < 4m Ω
 INSULATOR RESISTANCE: > 1000M Ω
 OPERATING VOLTAGE: 60V AC/DC
 DIELECTRIC WITHSTANDING VOLTAGE: 1000VAC FOR 1 MIN.

MATERIAL:

CONTACT OUTER SLEEVE: COPPER ALLOY
 CLIP (4 FINGER CONTACT): BERYLLIUM COPPER
 CONTACT PLATING:
 CLIP: A? Gold
 BODY: 200?0 TIN
 INSULATOR: GLASS FILLED POLYESTER (UL94V-0)

MECHANICAL:

OPERATING TEMPERATURE: -55° C TO +105° C
 SOLDER TEMPERATURE: 260° C FOR 10 SEC. (MAX.)

HOW TO ORDER:

B 0 1 4 - X X X X - X X X - Z

NUMBER OF CONTACTS:

06 thru 64

**"C" DIMENSION
DIP SPACING:**

- 3 - 7.62 (0.300")
- 4 - 10.16 (0.400")
- 6 - 15.24 (0.600")
- 9 - 22.86 (0.900")

**"H" DIMENSION
CONTACT HEIGHT:**

- 0 - 7.46mm (0.294")
- 1 - 5.84mm (0.230")
- 2 - 8.89mm (0.350")
- 3 - 11.30mm (0.445")

FRAME VERSION:

- 1 - W/ BAR
- 2 - W/OUT BAR

CLIP PLATING:

- 0 - Au FLASH
- 1 - 10u" Au
- 2 - 30u" Au

CONTACT PLATING OVERALL:

- 0 - FULL TIN
- 1 - FULL Au FLASH
- 3 - 10u" Au
- 4 - 15u" Au
- 5 - 30u" Au

CONTACT SELECTIVE PLATING:

- 6 - Au FLASH CONTACT AREA/TIN TAIL
- 7 - 10u" Au CONTACT AREA/TIN TAIL
- 8 - 15u" Au CONTACT AREA/TIN TAIL
- 9 - 30u" Au CONTACT AREA/TIN TAIL

**RoHS
COMPLIANT**

Rev	Drawn	Checked	Approved	Date
0	S.E.	S.M.	S.M.	6/15/98
A	WHS	S.M.	S.M.	8/15/06

SMP TECHNOLOGY, INC.

DIP Socket, 2.54mm Pitch, Machine Pin

TOL. DEC. .X +/- 0.3 .XX +/- 0.15 .XXX +/- ANGLE +/- 10° UNIT: mm

SERIES: B 0 1 4 - X X X X - X X X - Z

Pg: 1