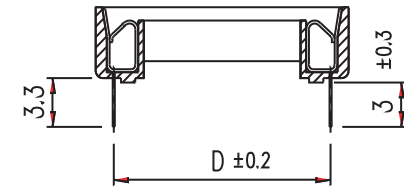
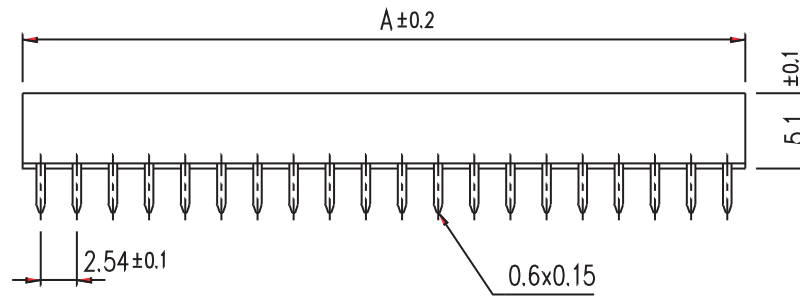


**DIMENSION(mm)**

CONTACTS	A	B	C	D
8	10.16	7.62	10.16	7.62 (0.3")
14	17.78	15.24	10.16	7.62 (0.3")
16	20.32	17.78	10.16	7.62 (0.3")
18	22.86	20.32	10.16	7.62 (0.3")
20	25.40	22.86	10.16	7.62 (0.3")
24	30.48	27.94	10.16	7.62 (0.3")
24	30.48	27.94	17.78	15.24 (0.6")
28	30.56	33.02	10.16	7.62 (0.3")
28	30.56	33.02	17.78	15.24 (0.6")
32	40.64	38.10	10.16	7.62 (0.3")
32	40.64	38.10	17.78	15.24 (0.6")
40	50.80	48.25	17.78	15.24 (0.6")
42	53.34	50.80	17.78	15.24 (0.6")
48	60.96	58.42	17.78	15.24 (0.6")
64	81.26	78.74	26.02	22.86 (0.9")



**ELECTRICAL:**

CURRENT: 1A  
 CONTACT RESISTANCE: < 20m Ω  
 INSULATOR RESISTANCE: > 1000M Ω  
 DIELECTRIC WITHSTANDING VOLTAGE: 1000VAC FOR 1 MIN.  
 OPERATING TEMPERATURE: -55° C TO +105° C

**MATERIAL:**

CONTACT: PHOSPHOR BRONZE  
 INSULATOR: PBT & 30% GLASS FIBER (UL94V-0)

**HOW TO ORDER:**

**B** 0 1 1 - X X X 0 - X 0 X - Z

**NUMBER OF CONTACTS:**  
 08 thru 64

**D DIMENSION  
 DIP SPACING:**  
 3 - 7.62mm (0.300")  
 6 - 15.24mm (0.600")  
 9 - 22.86mm (0.900")

**FRAME VERSION:**  
 1 - W/ BAR  
 2 - W/OUT BAR

**PLATING OVERALL:**  
 0 - TIN PLATED  
 1 - GOLD FLASH  
 3 - 10u" GOLD  
 4 - 15u" GOLD  
 5 - 30u" GOLD

**RoHS COMPLIANT**

Rev		Apv.	Date	<b>SMP TECHNOLOGY, INC.</b>
0	Issued	S.E.	4/15/97	
A	Revised for RoHS Compliance	G.T.	11/01/05	
SCALE	MAT'L	FINISH	DIP Socket, 2.54mm Pitch, Stamped Pin	
DRAWING No. B011-1				
TOL. DEC.	.X +/- 0.35	.XX +/- 0.25	.XXX +/-	ANGLE +/-
			UNIT: mm	SERIES: B 0 1 1-XXXX-XXX-Z
				Pg: 1