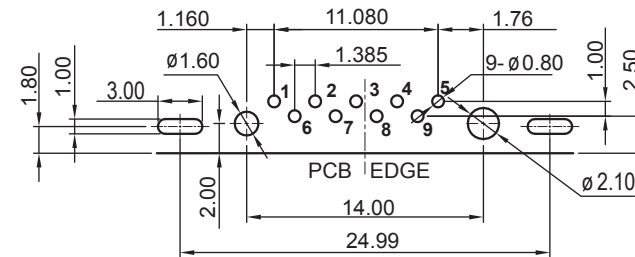
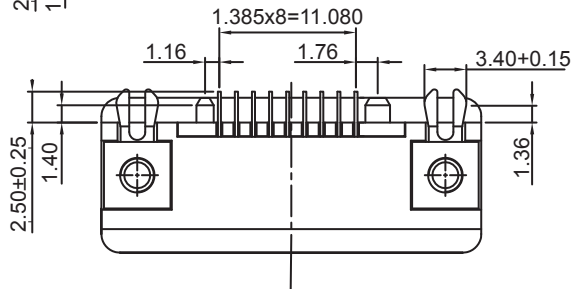
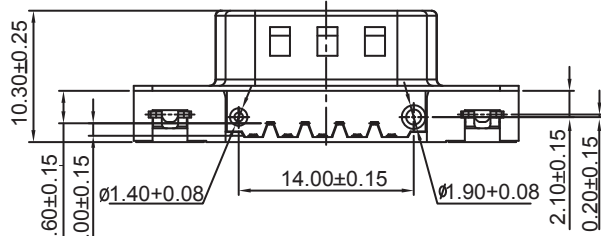


ISOMETRIC VIEW



RECOMMENDED P.C.B. LAYOUT

**ELECTRICAL:**

CONTACT CURRENT RATING: 3 AMP  
 DIELECTRIC WITHSTANDING VOLTAGE: AC 500/ 60 SEC. R.M.S.  
 INSULATION RESISTANCE: > 1000M ohms at 500V DC  
 CONTACT RESISTANCE: 25m ohm MAX.  
 OPERATING TEMPERATURE: -55° C TO +85° C

**MECHANICAL CHARACTERISTICS:**

TOTAL MATING FORCE: 4.0 Kgf MAX.  
 TOTAL UNMATING FORCE: 1.0 Kgf MAX.

**MATERIAL:**

INSULATOR: PBT (UL94V-0) RATED.  
 CONTACTS: COPPER ALLOY  
 SHELL: COLD ROLLER STEEL; NICKEL PLATED.

**HOW TO ORDER:**

A 5 1 2 - 0 9 1 X - X 1 X - Z

**CONTACT TYPE:**

2 - Male

**NUMBER OF CONTACTS:**

09

**INSULATOR**

- 0 - PC99 (Blue)
- 1 - PBT (Black)
- 2 - High Temperature Nylon (Black)
- 3 - High Temperature Nylon (PC99 Color)

**SELECTIVE GOLD PLATING:**

- 0 - Full Au Flash
- 1 - Au Flash Contact Area / Tin Tail
- 9 - 15u" Au Contact / Tin Tail
- A - 30u" Au Contact / Tin Tail

**FLANGE OPTION**

- 0 - # 4 / 40 Threaded Insert
- 1 - # 4 / 40 Threaded Insert  
With # 4 - 40 UNC  
Screwlock Installed
- 2 - # 4 / 40 Threaded Insert  
With # 4 - 40 UNC  
Screwlock (Bulk Packed)

**RoHS COMPLIANT**

Rev	Drawn	Checked	Approved	Date
0 Issued	B.S.	S.M.	S.M.	11/27/14

SOMETRIC **SMP TECHNOLOGY, INC.**

D-Sub Connector, Ultra Thin, 9 Position Male Pin, Thru Hole, 2.5mm Foot Print

SCALE: N/A

TOL. DEC. .X +/- 0.25 .XX +/- 0.25 .XXX +/- 0.13 ANGLE +/- 2° UNIT: mm

P/N: A512-091X-X1X-Z Pg: 1