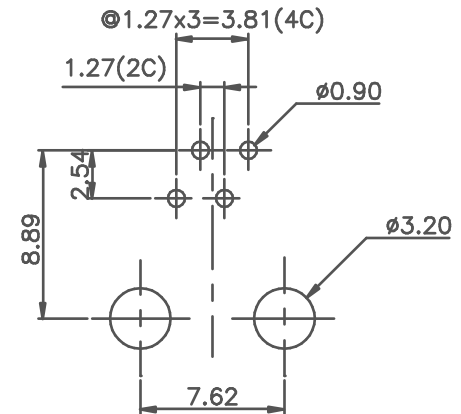
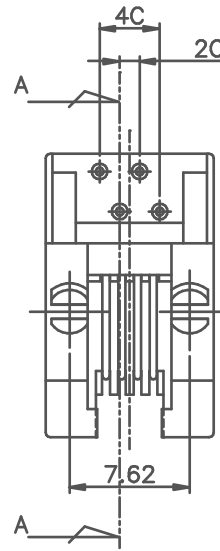


SECTION A-A



Thickness=1.60mm

PC Board Layout Component Side Shown

ELECTRICAL:

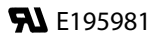
VOLTAGE RATING: 125 VAC RMS
 CURRENT: 1.5 AMP
 CONTACT RESISTANCE: < 20m Ω
 INSULATOR RESISTANCE: > 500M Ω
 DIELECTRIC WITHSTANDING VOLTAGE: 1000VAC FOR 1 MIN.
 OPERATING TEMPERATURE: -40° C TO +70° C

MATERIAL:

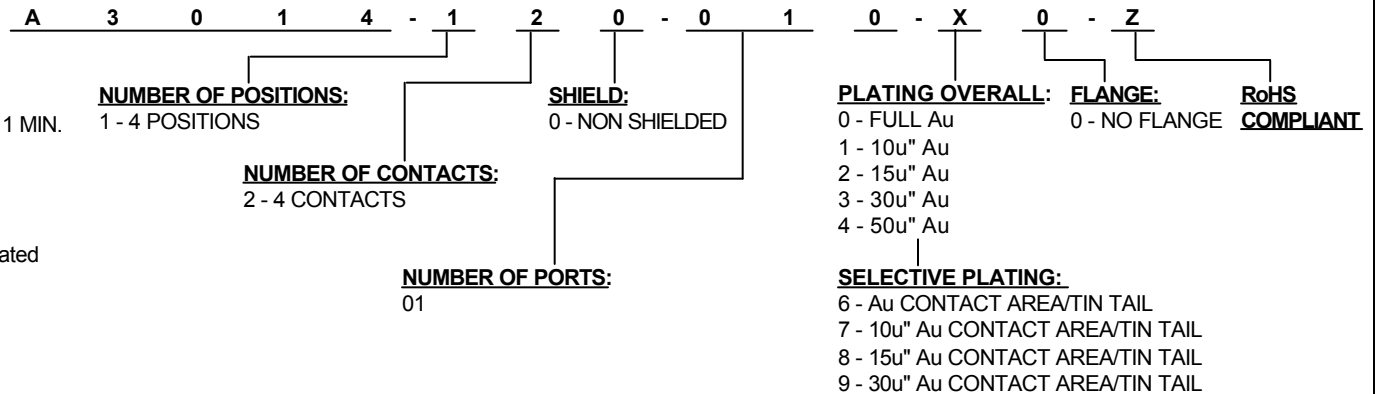
INSULATOR: PBT 10% Glass Filled (UL 94V-0 Rated)
 CONTACT: 0.45mm Dia. Phosphor Bronze over Nickel Plated

MECHANICAL:

DURABILITY: 500 Mating Cycles Min.



HOW TO ORDER:



Rev	Drawn	Checked	Approved	Date
0	D.H.	S.M.	S.M.	05/06/04
A	B.S.	S.M.	S.M.	3/6/07

SMP TECHNOLOGY, INC.

RJ11 (4P4C), Very Low Profile, Non-Shielded

SCALE	MAT'L	FINISH
TOL. DEC.	.X +/- 0.35	.XX +/- 0.25

.XXX +/- ANGLE +/- UNIT: mm

SERIES: A 3 0 1 4 - 1 2 0 - 0 1 0 - X 0 - Z