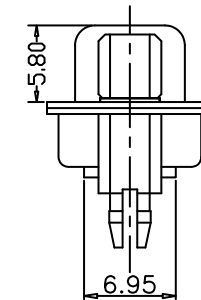
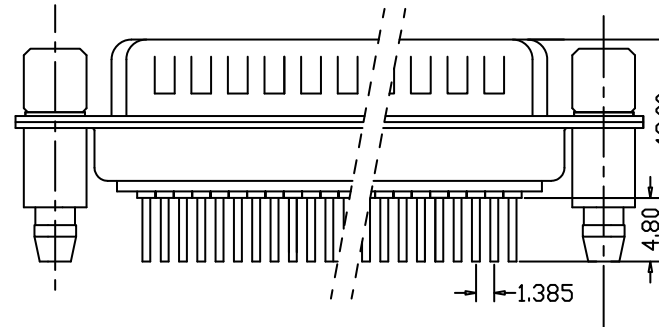
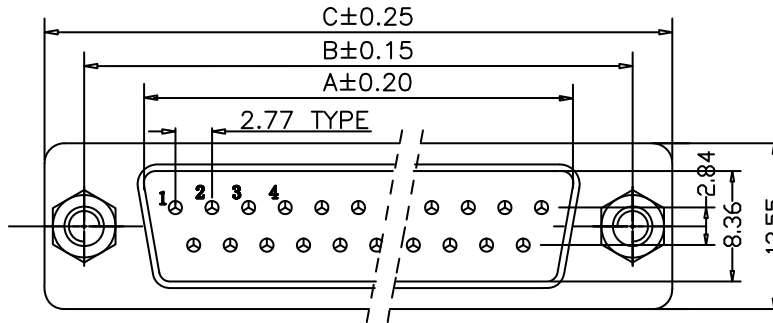


Recommended PCB Layout



NOTE:  
Mounting Option "21"  
Shown - See Page 2

DIMENSION(mm)

CONTACTS	A	B	C
9	16.33	24.99	30.81
15	24.66	33.32	39.14
25	38.38	47.04	53.04
37	54.84	63.50	69.32

HOW TO ORDER:

A 0 3 4 - X X 0 X - X X X X - Z

**ELECTRICAL:**

CURRENT: 5A  
 CONTACT RESISTANCE: < 30mΩ  
 INSULATOR RESISTANCE: > 1000MΩ  
 DIELECTRIC WITHSTANDING VOLTAGE: 1000VAC FOR 1 MIN.  
 OPERATING TEMPERATURE: -55° C TO +105° C

**MATERIAL:**

CONTACT: PHOSPHOR BRONZE  
 INSULATOR: PBT & 30% GLASS FIBER (UL94V-0)

**CONTACT TYPE:**

4 - MALE- PHOSPHOR BRONZE

**NUMBER OF CONTACTS:**

SEE CONTACT  
 NUMBER ABOVE

**SHELL PLATING:**

1 - TIN PLATED  
 4 - NICKELPLATED

**MOUNTING OPTION:**

SEE PAGE 2

**PLATING OVERALL:**

0 - FULL Au FLASH  
 4 - 10u" Au  
 5 - 15u" Au  
 7 - 30u" Au  
 8 - FULL TIN

**SELECTIVE PLATING:**

1 - Au FLASH CONTACT AREA/TIN TAIL  
 9 - 15u" Au CONTACT AREA/TIN TAIL  
 A - 30u" Au CONTACT AREA/TIN TAIL

**INSULATOR COLOR:**

1 - BLACK  
 2 - WHITE  
 3 - GREEN  
 4 - BLUE

**RoHS  
 COMPLIANT**

Rev	Drawn	Checked	Approved	Date
0 Issued	B.S.	S.M.	S.M.	04/29/15

**SMP TECHNOLOGY, INC.**

D - Sub Connector; Straight; PCB Type; Phosphor Bronze,

Stamped and Formed Contact Type

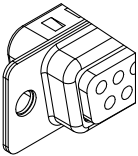
TOL. DEC. .X +/-0.25 .XX +/- 0.10 .XXX +/- 0.05 ANGLE +/-2° UNIT: mm

P/N: A034-XX0X-XXXX-Z

# A031 & A032 MOUNTING OPTIONS

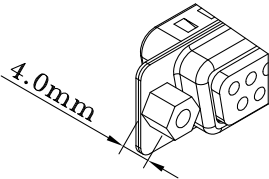
**MOUNTING OPTION 10**

3.05 MM DIAMETER NON-THREADED MOUNTING HOLE



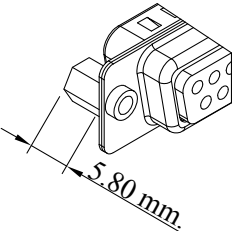
**MOUNTING OPTION 11 :**

RIVETED 4-40 UNC SCREW LOCK 4.0 mm ON BACK SIDE OF SHELL



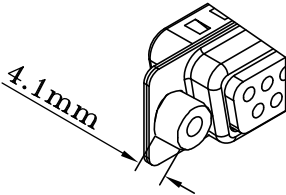
**MOUNTING OPTION 12 :**

RIVETED 4-40 UNC SCREW LOCK ON FRONT SIDE OF SHELL



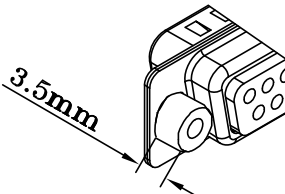
**MOUNTING OPTION 14 :**

4.1 mm RIVETED 4-40 SCREW LOCK ON BOTTOM SIDE OF SHELL



**MOUNTING OPTION 16 :**

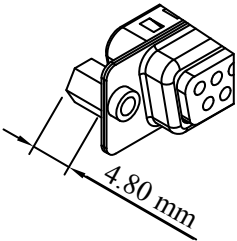
3.5 mm RIVETED 4-40 SCREW LOCK ON BOTTOM SIDE OF SHELL



\* For Mounting Options 11, 12 & with Nylok installed on inside threads - replace the "1" with the letter L. Example: Option 11 with Nylok installed - use mounting option L1.

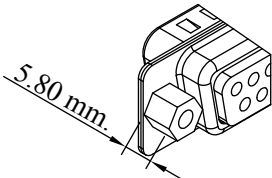
**MOUNTING OPTION 17 :**

RIVETED 4-40 UNC SCREW LOCK ON FRONT SIDE OF SHELL



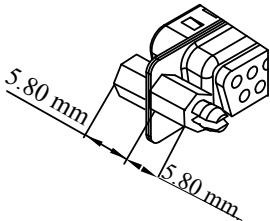
**MOUNTING OPTION 19 :**

RIVETED 4-40 UNC SCREW LOCK 5.8mm ON BACK SIDE OF SHELL



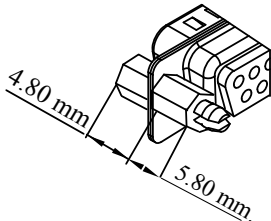
**MOUNTING OPTION 20:**

RIVETED 5.80 mm 4-40 UNC SCREW LOCK ON BACK SIDE OF SHELL; 5.80 mm UNC SCREWLOCK ATTACHED TO FRONT SIDE OF SHELL



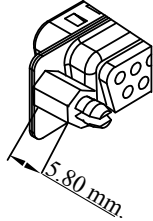
**MOUNTING OPTION 21:**

RIVETED 5.80 mm 4-40 UNC SCREW LOCK ON BACK SIDE OF SHELL; 4.80 mm UNC SCREWLOCK ATTACHED TO FRONT SIDE OF SHELL



**MOUNTING OPTION 22:**

RIVETED 5.80 mm 4-40 UNC SCREW LOCK ON BACK SIDE OF SHELL;



**MOUNTING OPTION 23:**

RIVETED 5.80 mm 4-40 UNC SCREW LOCK ON BACK SIDE OF SHELL;

