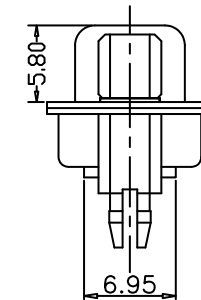
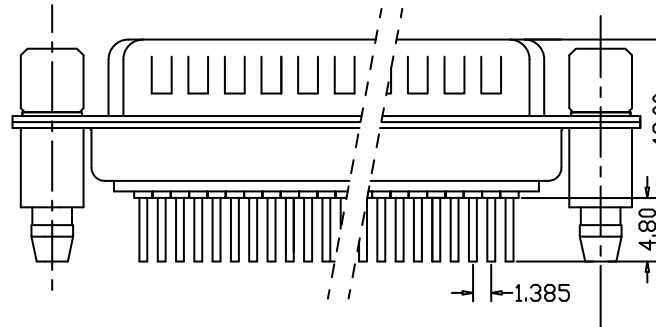
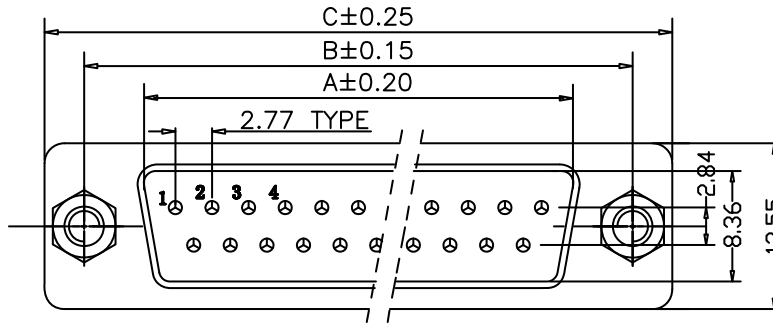


Recommended PCB Layout



NOTE:
Mounting Option "21"
Shown - See Page 2

DIMENSION(mm)

CONTACTS	A	B	C
9	16.33	24.99	30.81
15	24.66	33.32	39.14
25	38.38	47.04	53.04
37	54.84	63.50	69.32

HOW TO ORDER:

A 0 3 2 - X X 0 X - X X X X - Z **RoHS COMPLIANT**

ELECTRICAL:

CURRENT: 5A
 CONTACT RESISTANCE: < 30mΩ
 INSULATOR RESISTANCE: > 1000MΩ
 DIELECTRIC WITHSTANDING VOLTAGE: 1000VAC FOR 1 MIN.
 OPERATING TEMPERATURE: -55° C TO +105° C

MATERIAL:

CONTACT: COPPER ALLOY
 INSULATOR: PBT & 30% GLASS FIBER (UL94V-0)

CONTACT TYPE:

2 - MALE- COPPER ALLOY

NUMBER OF CONTACTS:

SEE CONTACT
 NUMBER ABOVE

SHELL PLATING:

1 - TIN PLATED
 4 - NICKELPLATED

MOUNTING OPTION:

SEE PAGE 2

PLATING OVERALL:

0 - FULL Au FLASH
 4 - 10u" Au
 5 - 15u" Au
 7 - 30u" Au
 8 - FULL TIN

INSULATOR COLOR:

1 - BLACK
 2 - WHITE
 3 - GREEN
 4 - BLUE

SELECTIVE PLATING:

1 - Au FLASH CONTACT AREA/TIN TAIL
 9 - 15u" Au CONTACT AREA/TIN TAIL
 A - 30u" Au CONTACT AREA/TIN TAIL

Rev	Drawn	Checked	Approved	Date
0	B.S.	S.M.	S.M.	11/05/14
A	B.S.	S.M.	S.M.	11/12/14

SMP TECHNOLOGY, INC.

D - Sub Connector; Straight; PCB Type; Copper Alloy,

Stamped and Formed Contact Type

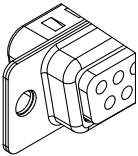
TOL. DEC. .X +/-0.25 .XX +/- 0.10 .XXX +/- 0.05 ANGLE +/-2° UNIT: mm

P/N: A032-XX0X-XXXX-Z

A031 & A032 MOUNTING OPTIONS

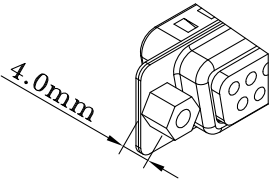
MOUNTING OPTION 10

3.05 MM DIAMETER NON-THREADED MOUNTING HOLE



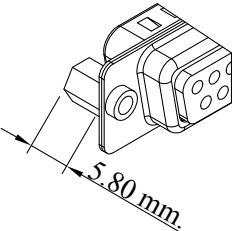
MOUNTING OPTION 11 :

RIVETED 4-40 UNC SCREW LOCK 4.0 mm ON BACK SIDE OF SHELL



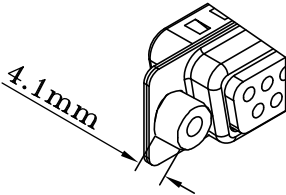
MOUNTING OPTION 12 :

RIVETED 4-40 UNC SCREW LOCK ON FRONT SIDE OF SHELL



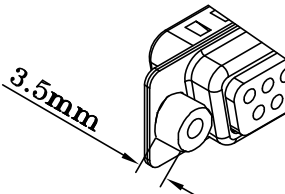
MOUNTING OPTION 14 :

4.1 mm RIVETED 4-40 SCREW LOCK ON BOTTOM SIDE OF SHELL



MOUNTING OPTION 16 :

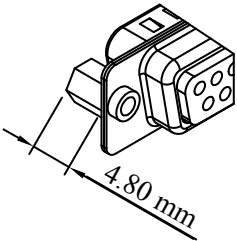
3.5 mm RIVETED 4-40 SCREW LOCK ON BOTTOM SIDE OF SHELL



* For Mounting Options 11, 12 & with Nylok installed on inside threads - replace the "1" with the letter L. Example: Option 11 with Nylok installed - use mounting option L1.

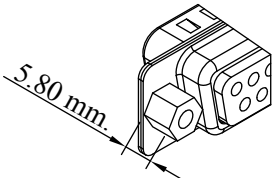
MOUNTING OPTION 17 :

RIVETED 4-40 UNC SCREW LOCK ON FRONT SIDE OF SHELL



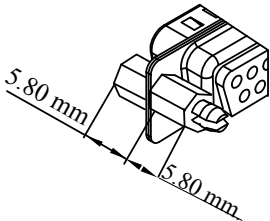
MOUNTING OPTION 19 :

RIVETED 4-40 UNC SCREW LOCK 5.8mm ON BACK SIDE OF SHELL



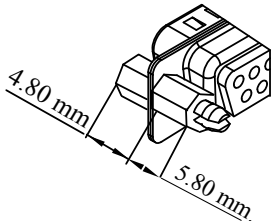
MOUNTING OPTION 20:

RIVETED 5.80 mm 4-40 UNC SCREW LOCK ON BACK SIDE OF SHELL; 5.80 mm UNC SCREWLOCK ATTACHED TO FRONT SIDE OF SHELL



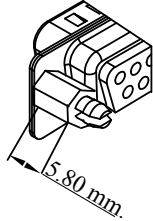
MOUNTING OPTION 21:

RIVETED 5.80 mm 4-40 UNC SCREW LOCK ON BACK SIDE OF SHELL; 4.80 mm UNC SCREWLOCK ATTACHED TO FRONT SIDE OF SHELL



MOUNTING OPTION 22:

RIVETED 5.80 mm 4-40 UNC SCREW LOCK ON BACK SIDE OF SHELL;



MOUNTING OPTION 23:

RIVETED 5.80 mm 4-40 UNC SCREW LOCK ON BACK SIDE OF SHELL;

