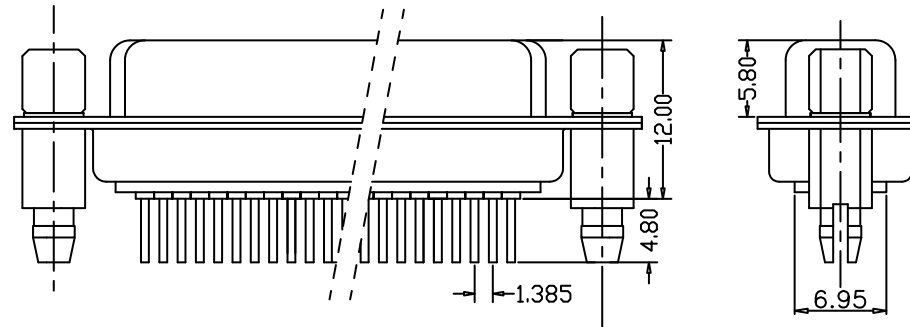
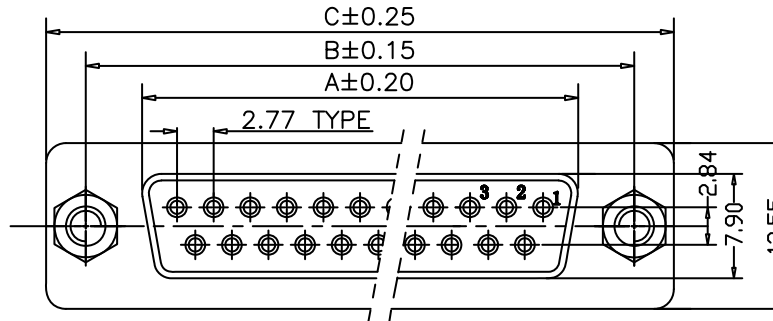


Recommended PCB Layout

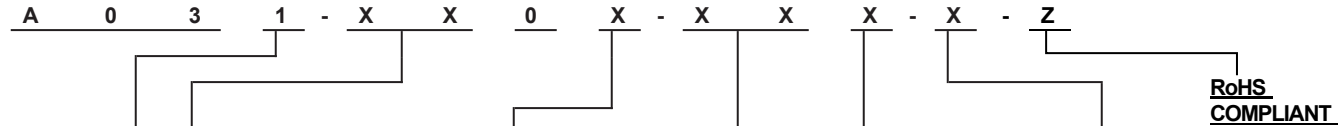


NOTE:  
Mounting Option "21"  
Shown - See Page 2

DIMENSION(mm)

CONTACTS	A	B	C
9	16.33	24.99	30.81
15	24.66	33.32	39.14
25	38.38	47.04	53.04
37	54.84	63.50	69.32

HOW TO ORDER:



**ELECTRICAL:**

CURRENT: 5A  
 CONTACT RESISTANCE: < 30mΩ  
 INSULATOR RESISTANCE: > 1000MΩ  
 DIELECTRIC WITHSTANDING VOLTAGE: 1000VAC FOR 1 MIN.  
 OPERATING TEMPERATURE: -55° C TO +105° C

**MATERIAL:**

CONTACT: COPPER ALLOY  
 INSULATOR: PBT & 30% GLASS FIBER (UL94V-0)

**CONTACT TYPE:**  
1 - FEMALE

**NUMBER OF CONTACTS:**  
SEE CONTACT  
NUMBER ABOVE

**SHELL PLATING:**  
1 - TIN PLATED  
4 - NICKEL PLATED

**MOUNTING OPTION:**  
SEE PAGE 2

**PLATING OVERALL:**  
0 - FULL Au FLASH  
4 - 10u" Au  
5 - 15u" Au  
7 - 30u" Au  
8 - FULL TIN

**SELECTIVE PLATING:**  
1 - Au FLASH CONTACT AREA/TIN TAIL  
9 - 15u" Au CONTACT AREA/TIN TAIL  
A - 30u" Au CONTACT AREA/TIN TAIL

**INSULATOR COLOR:**  
BLANK - BLACK  
1 - WHITE  
2 - BLUE  
3 - GRAY

**RoHS  
COMPLIANT**

Rev	Drawn	Checked	Approved	Date
0 Issued	B.S.	S.M.	S.M.	11/05/14
A Added Mounting Options	B.S.	S.M.	S.M.	11/12/14

**SMP TECHNOLOGY, INC.**

D-SUB CONNECTOR, STRAIGHT, PCB TYPE, FEMALE

STAMPED & FORMED CONTACT

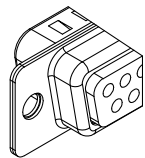
TOL. DEC. .X +/-0.25 .XX +/- 0.10 .XXX +/- 0.05 ANGLE +/-2° UNIT: mm

P/N: A031-XX0X-XXX-Z

# A031 & A032 MOUNTING OPTIONS

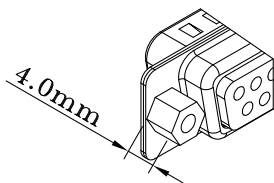
## MOUNTING OPTION 10

3.05 MM DIAMETER NON-THREADED MOUNTING HOLE



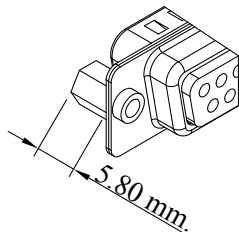
## MOUNTING OPTION 11 :

RIVETED 4-40 UNC SCREW LOCK  
4.0 mm ON BACK SIDE OF SHELL



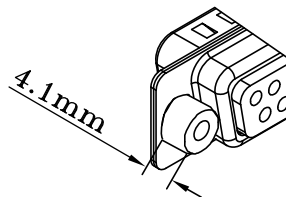
## MOUNTING OPTION 12 :

RIVETED 4-40 UNC SCREW LOCK ON  
FRONT SIDE OF SHELL



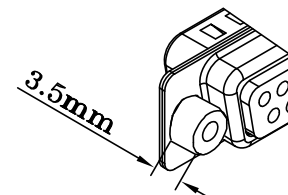
## MOUNTING OPTION 14 :

4.1 mm RIVETED 4-40 SCREW LOCK  
ON BOTTOM SIDE OF SHELL



## MOUNTING OPTION 16 :

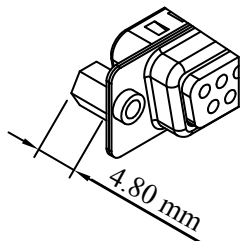
3.5 mm RIVETED 4-40 SCREW LOCK  
ON BOTTOM SIDE OF SHELL



\* For Mounting Options 11, 12 & with Nylok installed on inside threads - replace the "1" with the letter L. Example: Option 11 with Nylok installed - use mounting option L1.

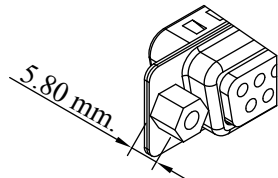
## MOUNTING OPTION 17 :

RIVETED 4-40 UNC SCREW LOCK ON  
FRONT SIDE OF SHELL



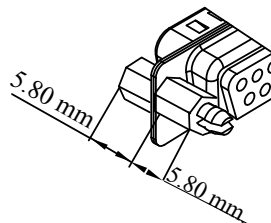
## MOUNTING OPTION 19 :

RIVETED 4-40 UNC SCREW LOCK  
5.8mm ON BACK SIDE OF SHELL



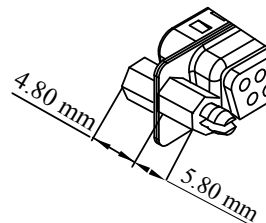
## MOUNTING OPTION 20:

RIVETED 5.80 mm 4-40 UNC SCREW  
LOCK ON BACK SIDE OF SHELL; 5.80  
mm UNC SCREWLOCK ATTACHED  
TO FRONT SIDE OF SHELL



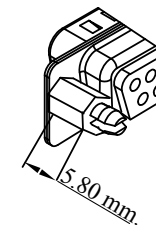
## MOUNTING OPTION 21:

RIVETED 5.80 mm 4-40 UNC SCREW  
LOCK ON BACK SIDE OF SHELL; 4.80  
mm UNC SCREWLOCK ATTACHED  
TO FRONT SIDE OF SHELL



## MOUNTING OPTION 22:

RIVETED 5.80 mm 4-40 UNC SCREW  
LOCK ON BACK SIDE OF SHELL;



## MOUNTING OPTION 23:

RIVETED 5.80 mm 4-40 UNC SCREW  
LOCK ON BACK SIDE OF SHELL;

