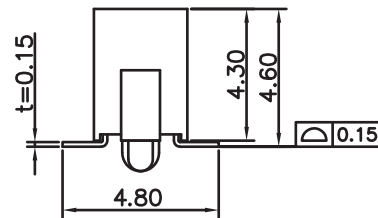
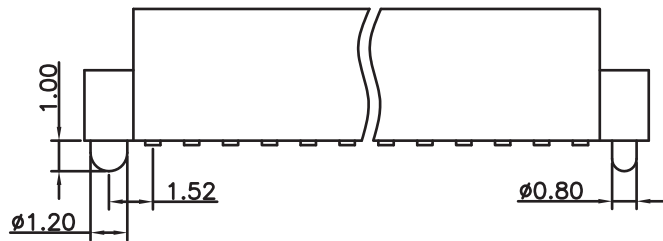


P.C.B LAYOUT



ELECTRICAL:

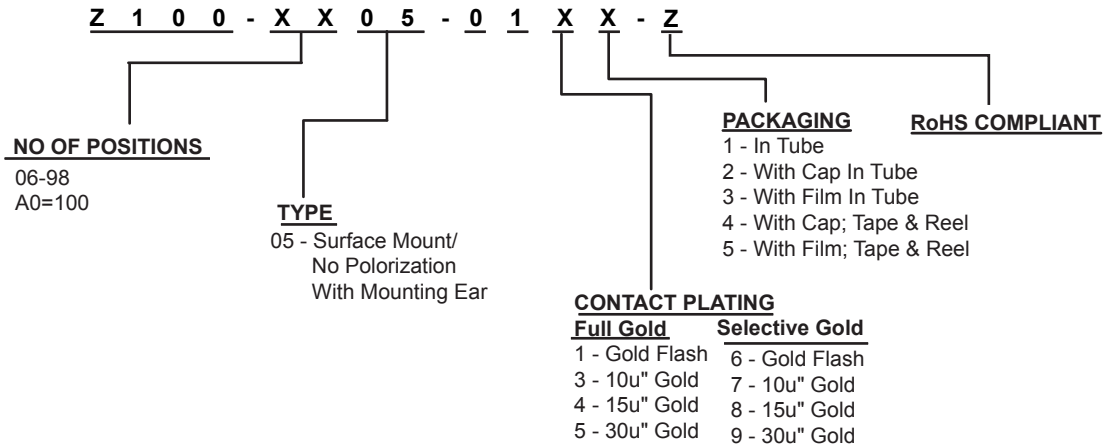
CURRENT RATING: 1A
 CONTACT RESISTANCE:
 <30 Milliohm Max
 INSULATION RESISTANCE:
 >5000 Megaohm Min
 DIELECTRIC WITHSTANDING VOLTAGE:
 600V (RMS) AC for 1 Minute
 OPERATING TEMPERATURE: -40°C to +105°C

MATERIAL:

INSULATOR: LCP
 CONTACT: Phosphor Bronze

MATERIAL:

DURABILITY: 50 Cycles
 RETENTION FORCE: 300g Min
 INSERTION FORCE: 56g
 SOLDERABILITY: Per MIL-STD-202F Method 208D
 MAX. PROCESSING TEMPERATURE: 260°C for 10 seconds



Rev	Drawn	Checked	Approved	Date
0 Issued	MDH	S.M.	S.M.	09/29/04
A Revised for RoHS Compliance	B.S.	S.M.	S.M.	9/19/07
B Revised footprint from 5.10 to 4.80	B.S.	S.M.	S.M.	11/14/07

SMP TECHNOLOGY, INC.

Receptacle Assembly; 1.27mm x 1.27mm; Top Entry; Surface

SCALE Mount; 4.3mm Height

TOL. DEC. .X +/- 0.3 .XX +/- 0.2 .XXX +/- 0.1 ANGLE +/- 5° UNIT: mm

P/N: Z100-XX05-01XX-Z