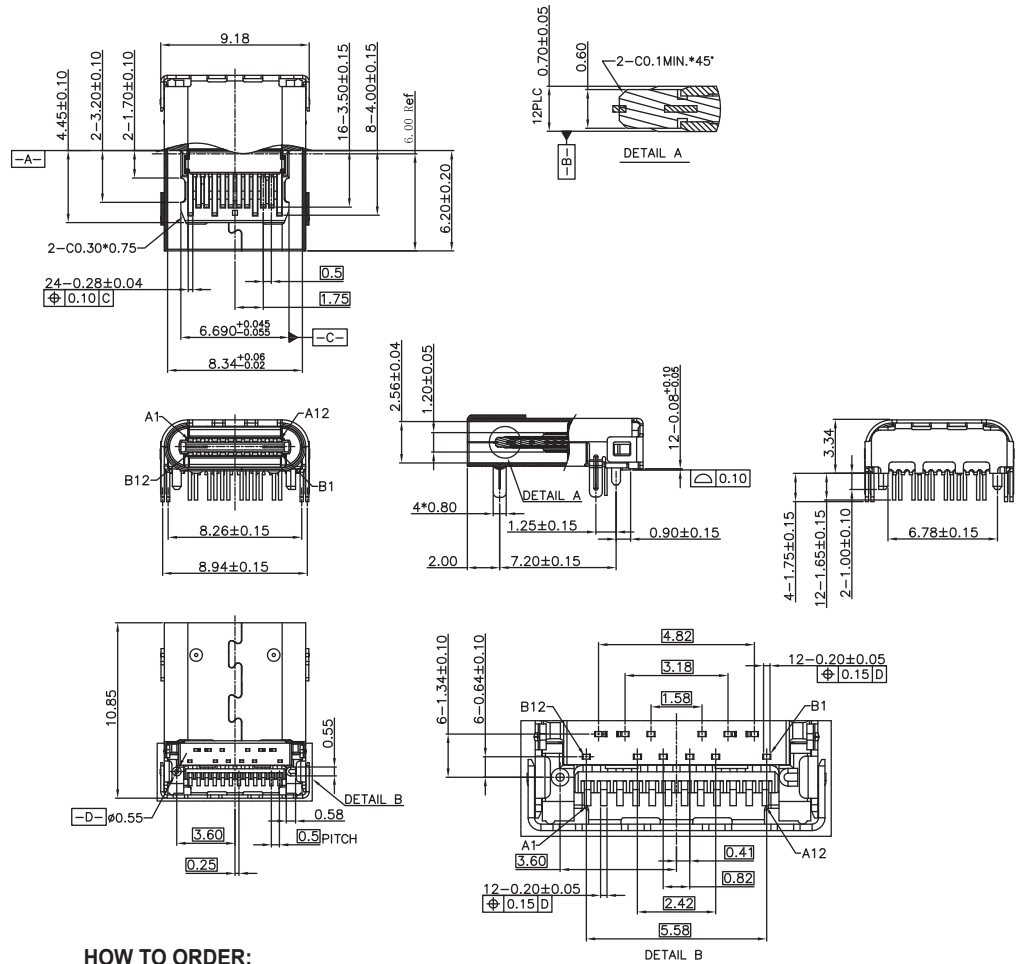


Isometric View



| Pin | Signal Name | Mating Sequence | Pin | Signal Name | Mating Sequence |
|-------|-------------|-----------------|-------|-------------|-----------------|
| A1 | GND | First | B12 | GND | First |
| A2 | SSTXp1 | Second | B11 | SSRXp1 | Second |
| A3 | SSTXn1 | Second | B10 | SSRXn1 | Second |
| A4 | VBUS | First | B9 | VBUS | First |
| A5 | CC1 | Second | B8 | SBU2 | Second |
| A6 | Dp1 | Second | B7 | Dn2 | Second |
| A7 | Dn1 | Second | B6 | Dp2 | Second |
| A8 | SBU1 | Second | B5 | CC2 | Second |
| A9 | VBUS | First | B4 | VBUS | First |
| A10 | SSRXn2 | Second | B3 | SSTXn2 | Second |
| A11 | SSTXp2 | Second | B2 | SSTXp2 | Second |
| A12 | GND | First | B1 | GND | First |
| SHELL | GND | | SHELL | GND | |

ELECTRICAL:

CURRENT RATING: 5A Min. for VBUS,
0.25A Min. for Other

CONTACT RESISTANCE:

< 20 Milliohm Max.

INSULATION RESISTANCE:

> 1000 Mgeaohm Min.

DIELECTRIC WITHSTANDING VOLTAGE:

100 VAC for 1 Minute

MATERIAL:

INSULATOR: LCP, UL94V-0, Black / Blue

CONTACTS: Copper Alloy

CONTACT PLATING:

Gold Plating over 50u" Nickel on Contact Area,
80u" Tin/ Plating over 50u" Nickel on Solder Area

SHELL: Stainless Steel with 50u" Nickel Plating

Mechanical:

INSERTION FORCE: 5 ~ 20N Max.

WITHDRAWAL FORCE: 8 ~ 20N Kg

DURABILITY: 10000 Cycles

HOW TO ORDER:

U **X** **0** **5** - **0** **3** **0** **2** - **0** **0** **X** **X** - **Z**

BODY STYLE

0 - Female Right Angle

OF POSITIONS

03 - 24 Position Combo
SMT & Thru Hole

MOUNTING STYLE

02 - Combo Thru Hole & SMT
Thru Hole Shell Legs

Insulator Color

0 - Black

1 - Blue

A 2 - White

CONTACT AREA PLATING

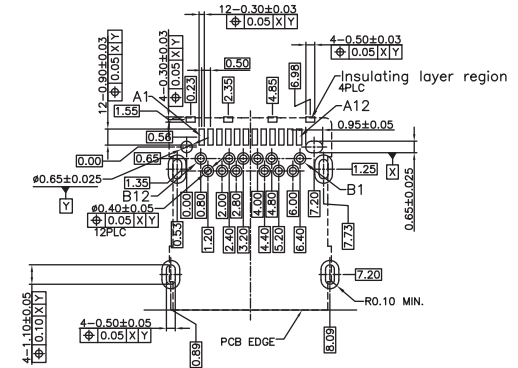
A 0 - Au Flash
1 - 7u" Au
2 - 10u" Au
3 - 15u" Au
4 - 30u" Au

PACKAGING

0 - Tray
2 - Tape & Reel

RoHS COMPLIANT

Recommended PCB Layout



| Rev | Drawn | Checked | Approved | Date |
|-----|-------|---------|----------|----------|
| 0 | B.S. | S.M. | S.M. | 07/29/15 |
| A | B.S. | S.M. | S.M. | 06/10/16 |

SMP TECHNOLOGY, INC.

USB 3.1 Receptacle, Type C Combo Thru Hole & Surface Mount Contacts,

Thru Hole Shell Legs

SCALE :N/A

TOL. DEC. .X +/- 0.25

.XX +/- 0.20

ANGLE +/- 5°

UNIT: mm

SERIES: UX05-0302-00XX-Z

Pg: 1