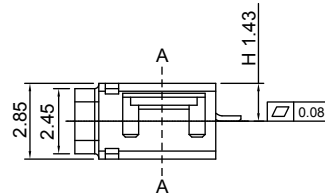
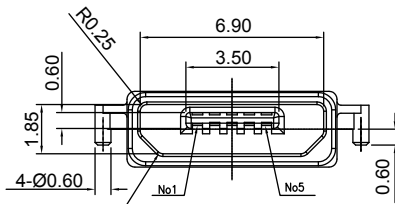
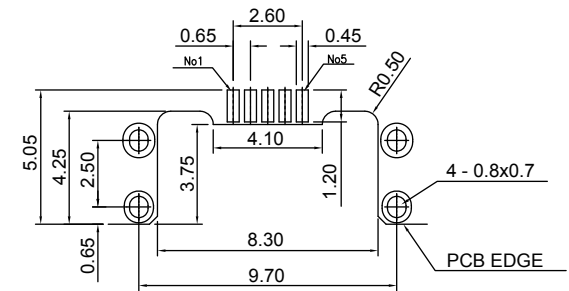


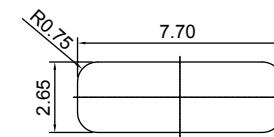
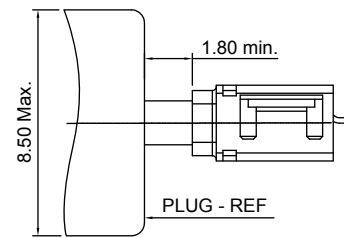
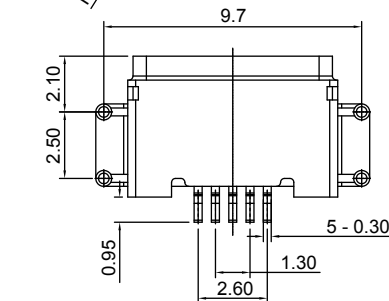
ISOMETRIC VIEW



SECTION A-A



RECOMMENDED PCB LAYOUT (TOP VIEW)



RECOMMENDED CASE OPENING

**ENVIRONMENTAL:**

OPERATING TEMP: -20°C to +85°C  
IP67 Rated

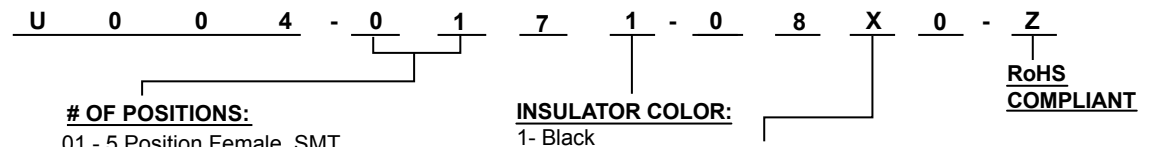
**ELECTRICAL:**

VOLTAGE RATING: 30V AC RMS  
CURRENT RATING: 1A Min.  
DIELECTRIC STRENGTH: 100V AC RMS 60MHz per Minute  
INSULATION RESISTANCE: 1000 MΩ Min.  
CONTACT RESISTANCE: 30 mΩ Max.

**MATERIALS:**

HOUSING: High Temperature Thermoplastic, UL94-VO; LCP  
COLOR: Black  
CONTACTS: Au over Nickel Plating in Contact Area; Tin Plating Over Nickel on PC Tails  
SHELL: Powder Metallurgy

**HOW TO ORDER:**



Rev	Drawn	Checked	Approved	Date
0	B.S.	S.M.	S.M.	10/05/17

**SMP TECHNOLOGY, INC.**

Micro USB, 5 Position, Mid Mount, Horizontal, Waterproof,

Surface Mount, Thru Hole, Plastic Peg

SCALE: N/A

Tolerance : Dimension     .X +/- 0.38     .XX +/- 0.25     .XXX +/- 0.20

P/N: U004-0171-08X0-Z