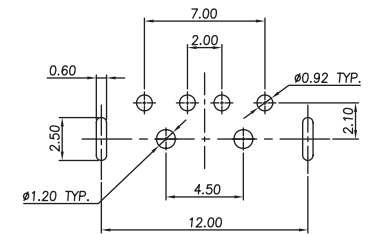
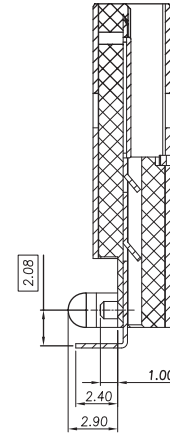
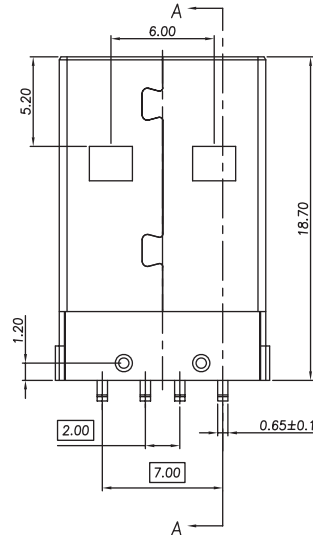
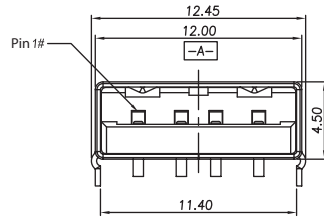
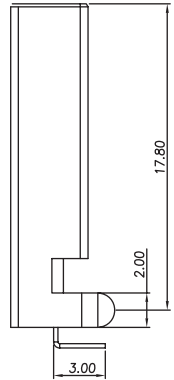
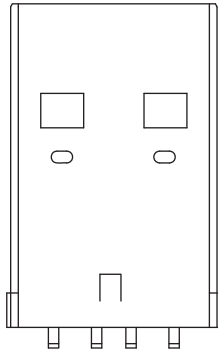
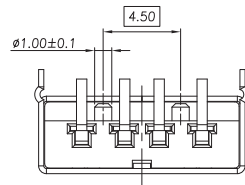


ELECTRICAL:

CURRENT RATING: 1.5A
 CONTACT RESISTANCE:
 < 30 Milliohm Max.
 INSULATION RESISTANCE:
 > 1000 Mgeaohm Min.
 DIELETRIC WITHSTANDING VOLTAGE:
 750V (rms) AC for 1 Minute
 OPERATING TEMPERATURE: -40° C to +60° C



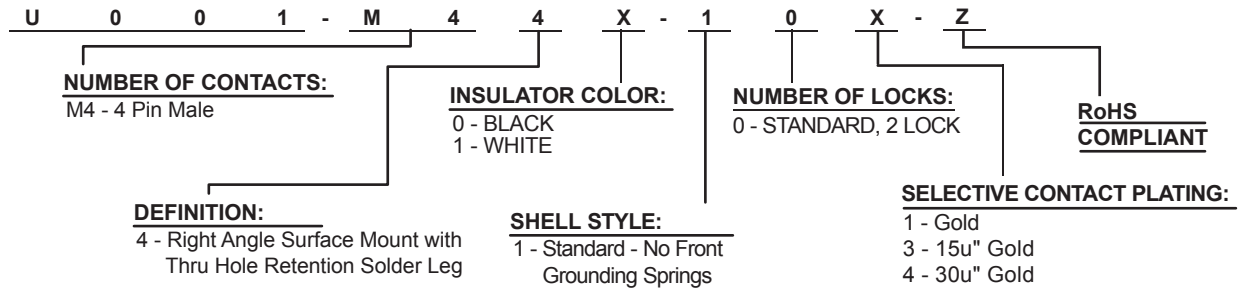
TOLERANCES: ±0.10
 RECOMMEND PCB LAYOUT



MATERIAL:

INSULATOR: Thermoplastic UL94V-0
 CONTACTS: Copper Alloy
 CONTACT PLATING:
 Gold Plating over Nickel on Contact Area,
 Tin/ Plating on Terminal
 SHELL: Cold Rolled Steel

HOW TO ORDER:



RECOMMENDED PC BOARD THICKNESS OF 1.57mm

Rev		Apv.	Date	SMP TECHNOLOGY, INC.
0	Issued	D.H.	7/13/04	
A	Revised for RoHS Compliance	WHS	6/1/06	
B	Updated Dimensions and Pin # 1 Designation	WHS	11/08/06	
SCALE :N/A				USB Connector, Male Connector, 4 Position, Right Angle, Thru Hole, w/ Retention Posts
TOL. DEC.	.X +/- 0.35	.XX +/- 0.20	ANGLE +/- 5°	UNIT: mm
SERIES: U001-M44X-10X-Z				Pg: 1