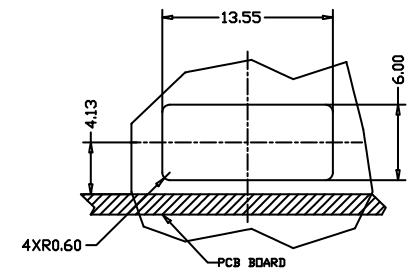
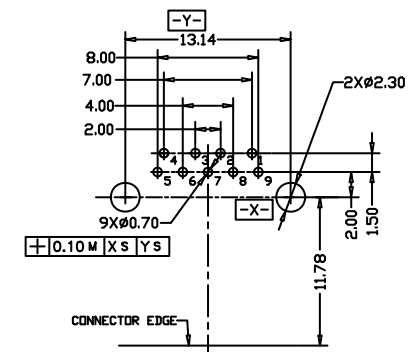
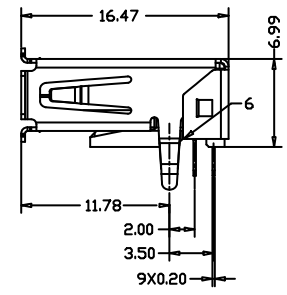
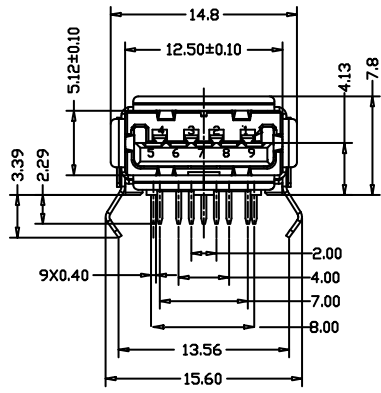


Recessed Mounting Configuration



Recommended Panel Cutout



Recommended P.C. Board Layout

ELECTRICAL:

CURRENT RATING: 1.8 Amps (Max)
 Applied to V bus pin and corresponding ground pin;
 .25 Amp (Min) For All Remaining Contacts
 CONTACT RESISTANCE:

30 milliohm Max (initial) for V bus and
 ground contacts. 50 milli ohms all other contacts.

INSULATION RESISTANCE:

100 Megaohm min @ 250 VDC

DIELECTRIC WITHSTANDING VOLTAGE:

500V (rms) AC for 1 Minute

OPERATING TEMPERATURE: -25° C to +85° C

MATERIAL:

INSULATOR: Thermoplastic UL94HB (PA-66)

Blue (Pantone 300C)

CONTACTS: Copper Alloy

CONTACT PLATING: Selective Finish Over 50u Nickel

SHELL: Stainless Steel

SHELL PLATING: Tin Plating on PC Tails, Nickel Overall

PACKAGING: Tape & Reel

HOW TO ORDER:

U 0 0 1 - 0 9 N X - 1 2 X - Z - Z

NUMBER OF CONTACTS: 09 - 9 Pin Female
INSULATOR COLOR: 0 - Black, 2 - Blue (Pantone 300C)
NUMBER OF LOCKS: 0 - Standard 2 Locks (Top, Bottom, Sides)
RoHS COMPLIANT
PACKAGING: Blank - Tray, 2 - Tube
SELECTIVE CONTACT PLATING: 1 - Au Flash, 3 - 30u" Au, 4 - 30u" Pd - Ni+2u" Gold Over 80u" Nickel; Solder Tails : 100-200u" Matte Tin
DEFINITION: 2 - Right Angle (Thru Hole) USB 3.0 Reverse
SHELL STYLE: 1 - Standard - No Front Grounding Springs

| Rev | Drawn | Checked | Approved | Date |
|-----|-------|---------|----------|----------|
| 0 | B.S. | S.M. | S.M. | 10/30/14 |
| | | | | |
| | | | | |

SMP TECHNOLOGY, INC.

USB 3.0 Connector, A Type, Female, Right Angle, DIP Type, Reverse