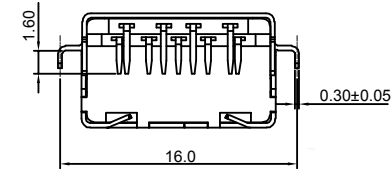
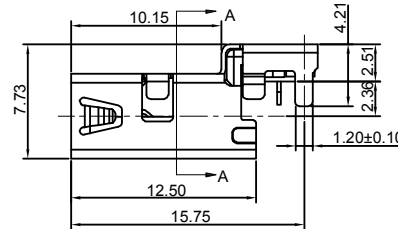
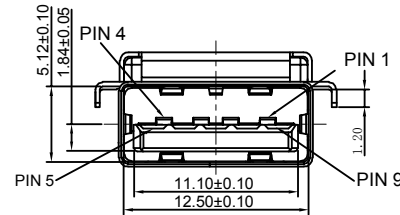
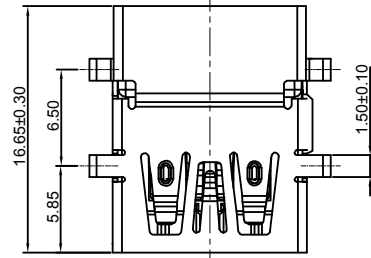


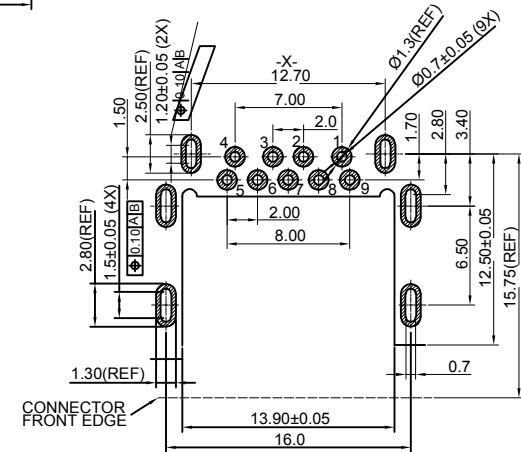
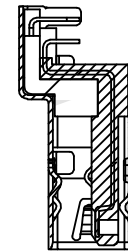
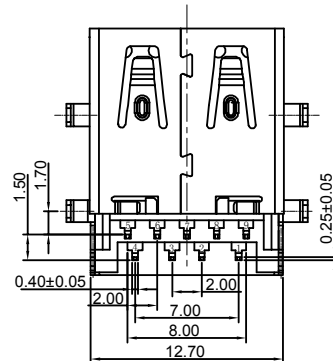
Isometric View



Contact Number	Signal Name
PIN1	VBUS
PIN2	D-
PIN3	D+
PIN4	GND
PIN5	Std A _SSRX-
PIN6	StdA _SSRX+
PIN7	GND _DRAIN
PIN8	StdA _SSRX -
PIN9	StdA _SSRX +
Shell	Shield

**ELECTRICAL:**

CURRENT RATING: 1.8 Amps (Max)  
 Applied to V bus pin and corresponding ground pin;  
 .25 Amp (Min) For All Remaining Contacts  
 CONTACT RESISTANCE:  
 30 milliohm Max (initial) for V bus and  
 ground contacts. 50 milli ohms all other contacts.  
 INSULATION RESISTANCE:  
 100 Megaohm min @ 250 VDC  
 DIELECTRIC WITHSTANDING VOLTAGE:  
 100V (rms) AC for 1 Minute  
 OPERATING TEMPERATURE: -25° C to +85° C



Recommended P.C.  
Board Layout

**HOW TO ORDER:**

U 0 0 1 - 0 9 K 2 - 1 0 X 5 - Z X

**NUMBER OF CONTACTS:**  
09 - 9 Pin Female

**INSULATOR COLOR:**  
2 - Blue (Pantone 300C)

**NUMBER OF LOCKS:**  
0 - Standard 2 Locks  
(Top, Bottom, Sides)

**RoHS COMPLIANT**

**PACKAGING**  
Blank - Tray  
1 - Tape & Reel  
2 - Tube

**DEFINITION:**  
K - Right Angle  
Reverse Mount  
Type 1

**SELECTIVE CONTACT PLATING:**

- 1 - 5u" Gold
- 2 - 15u" Gold
- 3 - 30u" Gold

**MATERIAL:**

INSULATOR: Thermoplastic LCP E1301  
 Blue (Pantone 300C)  
 CONTACTS: Phosphor Bronze  
 CONTACT PLATING: Gold Plating in Contact Area; 50u" Nickel Subplate Overall;  
 Solder Tails : 100u" Matte Tin  
 SHELL: Copper Alloy SHELL PLATING: 80u" Nickel Overall  
 PACKAGING: Tape & Reel

Rev	Drawn	Checked	Approved	Date
0	B.S.	S.M.	S.M.	10/13/14

**SMP TECHNOLOGY, INC.**

USB 3.0 Connector, A Type, Female, 9 Position, Thru Hole Reverse Mount,  
Type 1; Halogen Free