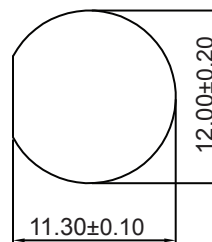
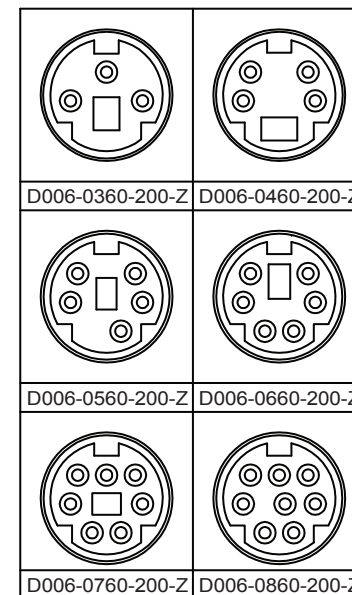


Nut  
P/N: HW-N-M12x1.0-17



Panel Cutout



**ELECTRICAL:**

CURRENT RATING: 2 AMP / CONTACT  
VOLTAGE RATING: 12 VDC  
WATERPROOF: IPX7

**MATERIAL:**

HOUSING: THERMOPLASTIC PBT (UL94V-0), BLACK  
CONTACT: COPPER ALLOY, Au FLASH OVER 50u" NICKEL  
SHELL: BRASS, NICKEL PLATED  
OPERATING TEMPERATURE: -20° C ~ 85° C

**HOW TO ORDER:**

D 0 0 6 - X X 6 0 - 2 0 0 - Z

**NUMBER OF POSITIONS**

- 03 - 3 Positions
- 04 - 4 Positions
- 05 - 5 Positions
- 06 - 6 Positions
- 07 - 7 Positions
- 08 - 8 Positions

**RoHS COMPLIANT**

**PLATING:**

0 - Au FLASH CONTACT AREA

Rev	Drawn	Checked	Approved.	Date
0	Issued	B.S.	S.M.	S.M.

**SMP TECHNOLOGY, INC.**

Mini Din, Waterproof, All Metal, Front Panel Mount, Front Screw Mount