

DIM "D"	PCB THK (REF)
4.10	1.57

ELECTRICAL:

CURRENT RATING: 1.1 AMPS PER PIN
 VOLTAGE RATING: 50 VOLTS AC (RMS)/DC
 CONTACT RESISTANCE: < 30m
 INSULATOR RESISTANCE: > 1000M
 DIELECTRIC WITHSTANDING VOLTAGE: 500VAC FOR 1 MIN.
 OPERATING TEMPERATURE: UP TO +65° C

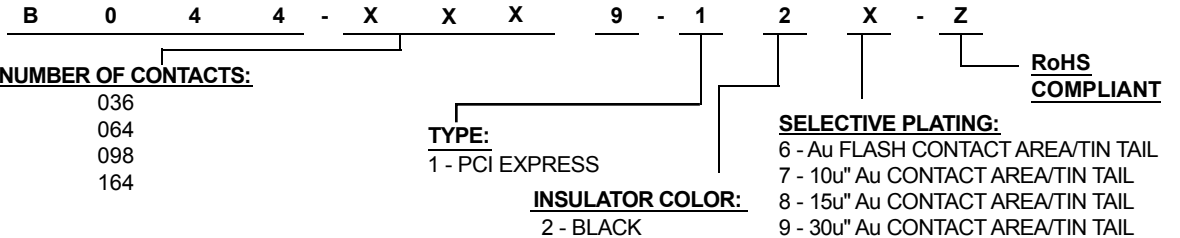
MECHANICAL:

INSERTION FORCE: 117 GRAMS MAX. PER CONTACT PAIR

MATERIAL:

INSULATOR: HIGH TEMPERATURE THERMOPLASTIC UL94V-0
 CONTACT: COPPER ALLOY
 STANDARD PLATING: GOLD PLATING OVER NICKEL ON CONTACT AREA
 TIN SOLDER TAIL

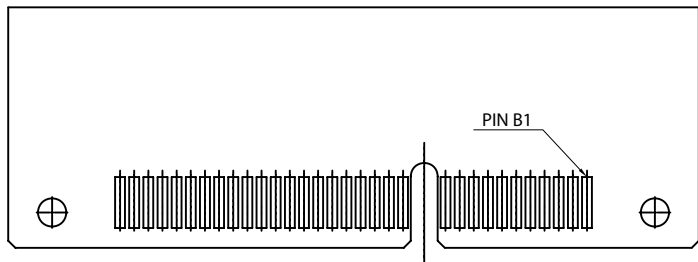
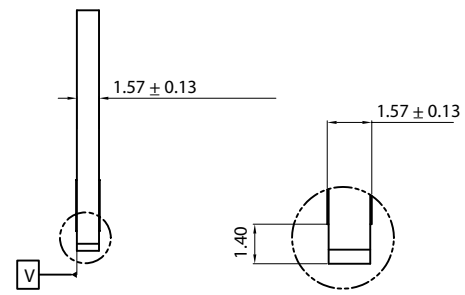
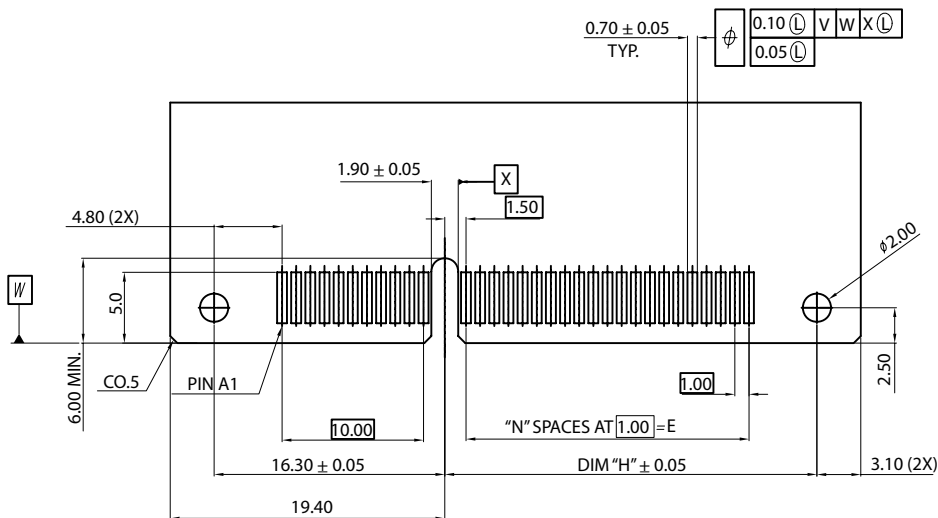
HOW TO ORDER:



Rev	Drawn	Checked	Approved	Date	
0	Issued	WHS	S.M.	S.M.	10/25/07

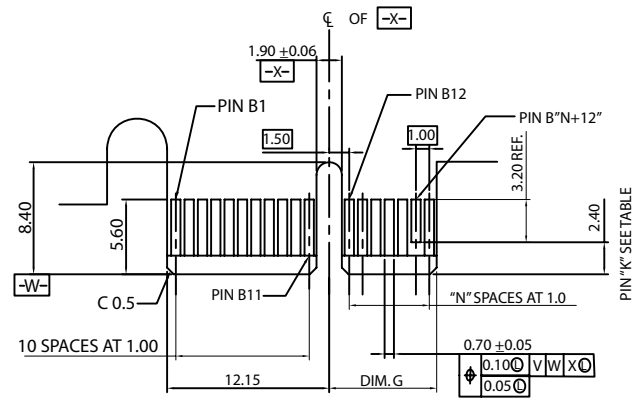
SMP TECHNOLOGY, INC.

SCALE: N/A PCI Express Card Edge Connector; Straddle Mount

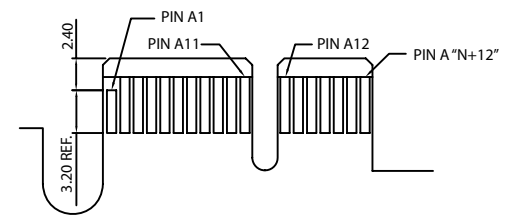
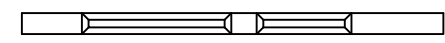


RECOMMENDED PCB LAYOUT

POSITIONS	N	DIM "G"	DIM "H"	"K"
36	6	8.15	12.30	B17
64	20	22.15	26.30	B17,B31
98	37	39.15	43.30	B17,B31,B48
164	70	72.15	76.30	B17,B31,B48,B81



I/O PANEL DIRECTION
PRIMARY (COMPONENT) SIDE



SOLDER SIDE

Rev	Drawn	Checked	Approved	Date
0	WHS	S.M.	S.M.	10/25/07

SMP TECHNOLOGY, INC.

SCALE: N/A

PCI Express Card Edge Connector; Straddle Mount

TOL. DEC. .X +/- 0.35 .XX +/- 0.25 .XXX +/- 0.08 ANGLE +/- 0.3° UNIT: mm

P/N: B044-XXX9-12X-Z