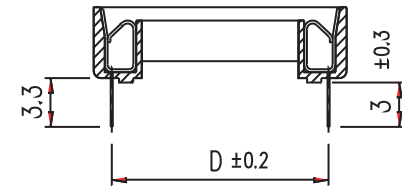
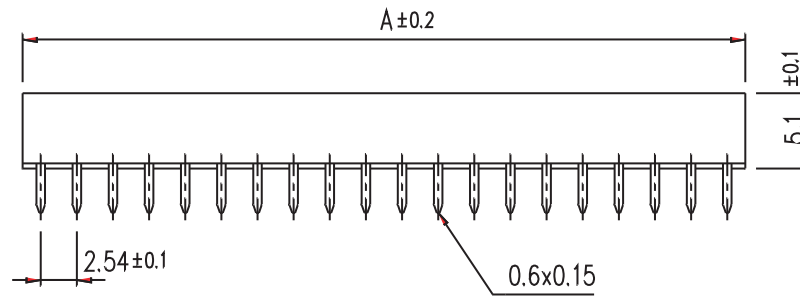


DIMENSION(mm)

| CONTACTS | A | B | C | D |
|----------|-------|-------|-------|--------------|
| 8 | 10.16 | 7.62 | 10.16 | 7.62 (0.3") |
| 14 | 17.78 | 15.24 | 10.16 | 7.62 (0.3") |
| 16 | 20.32 | 17.78 | 10.16 | 7.62 (0.3") |
| 18 | 22.86 | 20.32 | 10.16 | 7.62 (0.3") |
| 20 | 25.40 | 22.86 | 10.16 | 7.62 (0.3") |
| 24 | 30.48 | 27.94 | 10.16 | 7.62 (0.3") |
| 24 | 30.48 | 27.94 | 17.78 | 15.24 (0.6") |
| 28 | 30.56 | 33.02 | 10.16 | 7.62 (0.3") |
| 28 | 30.56 | 33.02 | 17.78 | 15.24 (0.6") |
| 32 | 40.64 | 38.10 | 10.16 | 7.62 (0.3") |
| 32 | 40.64 | 38.10 | 17.78 | 15.24 (0.6") |
| 40 | 50.80 | 48.25 | 17.78 | 15.24 (0.6") |
| 42 | 53.34 | 50.80 | 17.78 | 15.24 (0.6") |
| 48 | 60.96 | 58.42 | 17.78 | 15.24 (0.6") |
| 64 | 81.26 | 78.74 | 26.02 | 22.86 (0.9") |



ELECTRICAL:

CURRENT: 1A
 CONTACT RESISTANCE: < 20m Ω
 INSULATOR RESISTANCE: > 1000M Ω
 DIELECTRIC WITHSTANDING VOLTAGE: 1000VAC FOR 1 MIN.
 OPERATING TEMPERATURE: -55° C TO +105° C

MATERIAL:

CONTACT: PHOSPHOR BRONZE
 INSULATOR: PBT & 30% GLASS FIBER (UL94V-0)

HOW TO ORDER:

B 0 1 1 - X X X 0 - X 0 X - Z

NUMBER OF CONTACTS:
 08 thru 64

**D DIMENSION
 DIP SPACING:**
 3 - 7.62mm (0.300")
 6 - 15.24mm (0.600")
 9 - 22.86mm (0.900")

FRAME VERSION:
 1 - W/ BAR
 2 - W/OUT BAR

PLATING OVERALL:
 0 - TIN PLATED
 1 - GOLD FLASH
 3 - 10u" GOLD
 4 - 15u" GOLD
 5 - 30u" GOLD

RoHS COMPLIANT

| | | | | | |
|--------------------|-----------------------------|--------------|---------------------------------------|-----------------------------|----------|
| Rev | | Apv. | Date | SMP TECHNOLOGY, INC. | |
| 0 | Issued | S.E. | 4/15/97 | | |
| A | Revised for RoHS Compliance | G.T. | 11/01/05 | | |
| SCALE | MAT'L | FINISH | DIP Socket, 2.54mm Pitch, Stamped Pin | | |
| DRAWING No. B011-1 | | | | | |
| TOL. DEC. | .X +/- 0.35 | .XX +/- 0.25 | .XXX +/- | ANGLE +/- | UNIT: mm |
| | | | SERIES: B 0 1 1-XXXX-XXX-Z | Pg: 1 | |